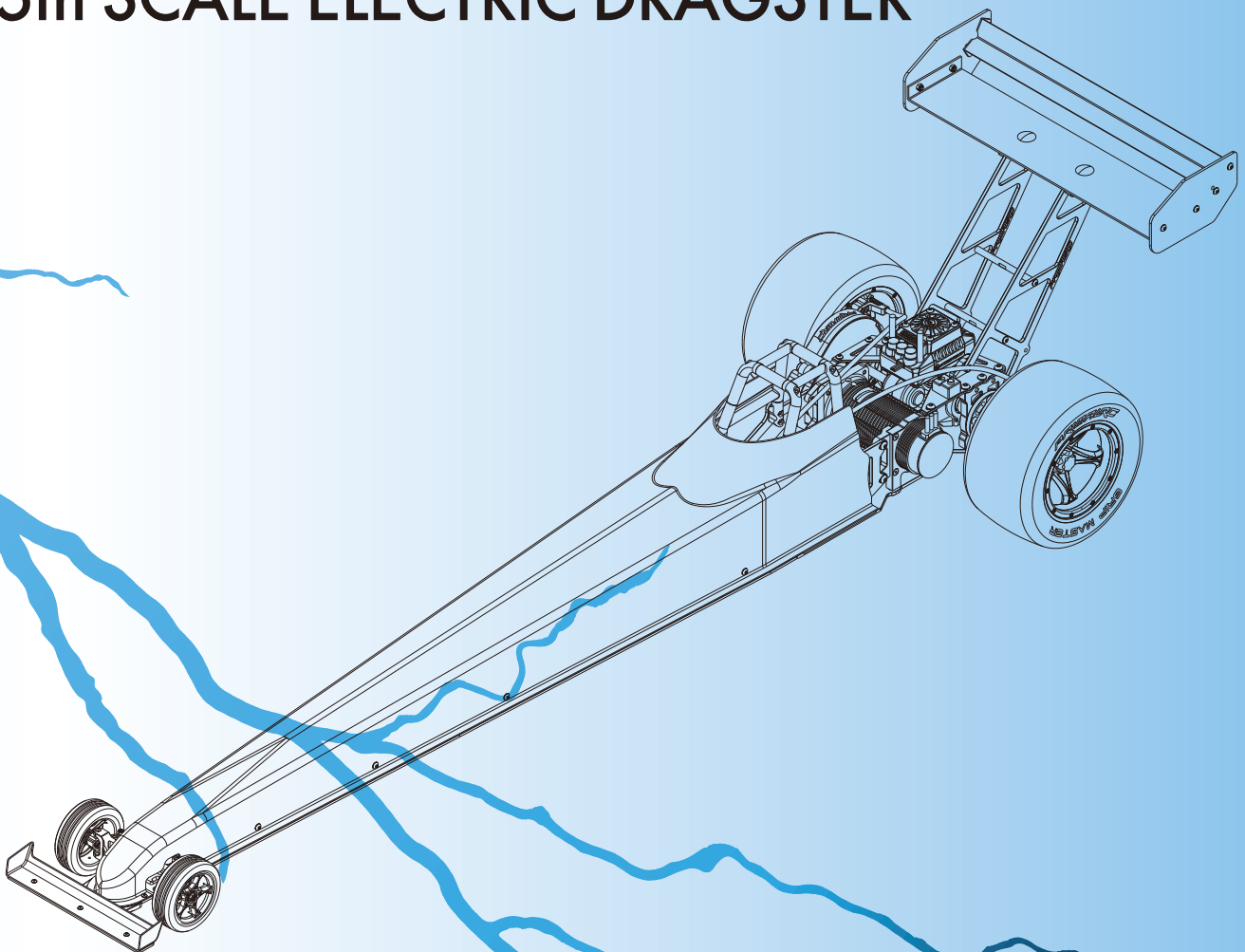


INSTRUCTION MANUAL

QUICKSILVER

1 / 5th SCALE ELECTRIC DRAGSTER



PRIMALRC

WWW.PRIMALRC.COM



Safety Guidelines

WARNING: RISK OF FIRE, INJURY OR DEATH

The dragster is not a toy. The dragster requires an advanced set of skills and is not intended for use by children or minors under the age of 18. The dragster is intended to be purchased and operated by competent, adult R/C users possessing qualified skills and experienced driving ability. The user of this vehicle should be practical, mature, intelligent, and display good sense.

Caution must be taken to ensure the safety of yourself and others around you. This dragster is very large and is capable of high speed and quick acceleration. Collisions of a critical nature (injury, death, severe property damage) can result if the dragster is operated in a careless or unsafe manner. Always take great care to make sure all systems are working properly before operating. The user must be aware of their limits and abilities. Make certain to have adequate space where the dragster can be run safely.

Terms of Use

This product is sold by Primal RC with the understanding that the buyer accepts full responsibility for all actions associated with its use. Serious injury, property damage, or death can result from driving the dragster or using any of the included accessories in an unsafe or irresponsible way. The buyer assumes all liability with this product including any actions that occur due to a failure to follow its safety and operating instructions resulting in unsafe or improper use or any action that violates pertinent laws or regulations. Primal RC, and all Primal RC dealers, will not be held accountable under any circumstances with the use of this product resulting in property damage, personal injury, or death. This includes any willful or unintentional damages that may arise out of the assembly or use of the product or its accessories. The user accepts all liability by the act of using and operating the dragster and releases Primal RC, and all Primal RC dealers of any and all liability associated with its use. Primal RC requests that you do not use this product if you as a user do not accept liability of ownership. If you don't accept liability, please do not open any of the enclosed accessories, do not attempt to start it, and contact us to make arrangements to return the product. Used vehicles cannot be accepted for returns or exchanges under any circumstances. The material included in this manual can be changed without notice. Primal RC reserves the right to make improvements to the products with no commitment to integrate those improvements into products sold previously. If you have any questions regarding this Terms of Use, stop and do not go any further. Do not run your vehicle and contact Primal RC at sales@primalrc.com.

Safety is your responsibility

- Your radio may be subject to radio interference from many sources that are out of your control. Please be aware that radio interference may cause a temporary loss of control. Allow adequate space in all directions when running your model to prevent collisions if radio interference should occur.
- Test the range of your radio in the area to be driven in. Make sure not to drive too far and go out of range. After testing the range, start by driving slowly in the area to make sure there is no interference that can cause temporary losses of control.
- Always test the failsafe system every time before use to ensure it's working properly (instructions are in the radio manual).
- Use new or freshly charged batteries in order to boost signal output power and range.
- Drive in the proper area. This product is not designed to be used in heavy traffic areas where its operation would cause pedestrian and vehicle interruptions. This is recommended to prevent collisions causing property damage, injury, or death.
- Try to always bring a friend while driving. Another set of eyes is helpful to identify potential hazards such as an animal or person crossing in the driving path.
- Always have a clear view of the model when driving. Don't drive at night or when your vision may be blocked in any way.
- Don't drive the model too close to you, other persons, or property where collisions may occur. Allow a comfortable amount of space to maneuver the vehicle.
- Be sure to check over the model after each session used. Check for damage or any loose parts and correct any issues right away before using again. Make sure to check and tighten the wheel nuts before each session.
- Do not pick up the model by its wheels or tires. Keep your hands free and clear of any moving parts when the batteries are in use.
- Gravel, dirt, sticks, and other debris can be kicked up from the rear wheels during aggressive starts. Avoid standing directly behind the dragster and make sure other watchers are at a safe distance to avoid being hit. Eye protection is always recommended.
- Avoid making changes not shown or suggested in the instruction manual. You can cause damage to the model and injury to others if the product is altered in a way not intended.
- VERY IMPORTANT: Always turn off the dragster first, then the transmitter. Otherwise throttle servo damage will occur if dragster is left on.
- Remember: safety first. Create a safe environment to run in and use good common sense always. This will ensure maximal enjoyment while using the product.

Copyright 2016 Primal RC



Table of Contents

| | |
|----|---------------------|
| 2 | Before you Drive |
| 3 | Receiver connection |
| 4 | Radio Operations |
| 5 | Assembly |
| 5 | 5 Gear Box |
| 6 | 6 Chassis |
| 7 | 7 Rear Arm |
| 9 | 9 Motor assembly |
| 10 | 10 Gear mesh |
| 13 | 13 Brake system |
| 14 | 14 Front End |
| 19 | 19 Lower Chassis |
| 20 | 20 Body |
| 23 | 23 Front Tire |
| 23 | 23 Rear Tire |
| 25 | 25 Exploded View |
| 27 | 27 Parts List |

Thank you for purchasing the Primal RC 1/5 Scale Electric Dragster.

This manual contains the instructions you need to operate and maintain your dragster. It is very important that you take the time to read and understand the instruction and radio manual. Make sure you read and follow the precautions and warnings in the Safety Guidelines section which can be found on the back of the front cover. These guidelines will educate you on how to run your dragster safely and maximize its longevity and performance.

This dragster requires advanced R/C user experience and expertise. You must be 18 years of age or older to operate this vehicle. Even if you are an experienced R/C driver, it is important to read and follow the safety guidelines in this manual.

If you have any questions regarding this vehicle or this manual: Stop, do not use this vehicle and contact us at www.PrimalRC.com.

Thank you again for your purchase and we look forward to exceeding your expectations.

Before You Drive

It is extremely important that you read, understand, and follow all instructions in the manuals included with this product in order to prevent serious damage to your dragster, yourself, and your property. If the user fails to follow these instructions, it will be considered negligence.

Before starting your dragster, read and understand all manuals and familiarize yourself with the model completely. If you decide this model is not the right choice for you or you do not want to assume responsibility for your safety, then do not attempt to start it. Do not run the vehicle at all and please contact us to make arrangements to return your vehicle.

If your vehicle arrives with damage from transit please do not run the vehicle and contact us.

Used vehicles cannot be accepted for returns or exchanges under any circumstances.

If you have any questions about your dragster, please email us at Sales@PrimalRC.com. Maintenance and replacement parts may be purchased directly from www.PrimalRC.com.

Your satisfaction is our primary goal at Primal RC!

CAUTIONS



To prevent serious personal injury and/or property damage, operate all remotely controlled models in a responsible manner as outlined herein.

CHOOSE THE RIGHT PLACE TO OPERATE YOUR R/C MODEL.

- Do not run on public streets or highways. This could cause serious accidents, personal injuries, and/or damage.
- Never run R/C models near people or animals.
- To avoid injury, do not run in confined spaces.
- Do not run where loud noises can disturb others, such as hospitals and residential areas.
- Never run indoors. There is high risk of fire and/or damage.

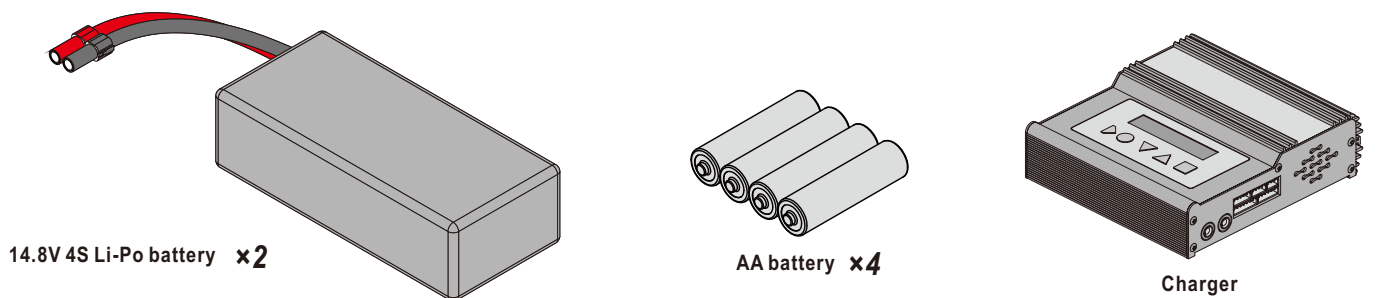
INSPECT YOUR MODEL BEFORE OPERATION.

- Make sure that screws and nut are properly tightened. It is also a good idea to use removable thread lock wherever metal screws go into metal, especially for engine mounts and the engine pilot shaft.
- Always use fresh batteries for your transmitter and for your receiver to avoid losing control of the model.
- Always test the brakes and throttle before starting your engine to avoid losing control of the model.
- Make sure no one else is using the same radio frequency as you are using.

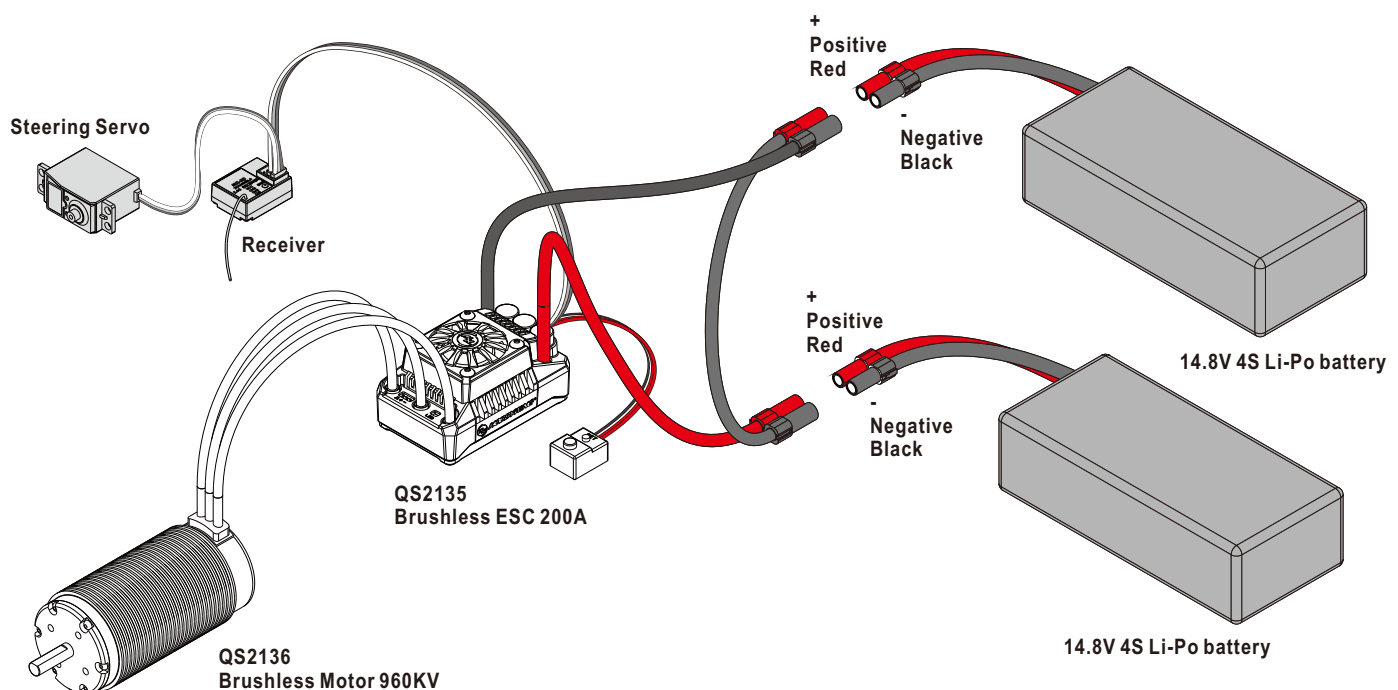
AFTER OPERATION OF YOUR R/C MODEL.

- Turn off receiver first, then turn off transmitter, this will prevent runaways.
- Be careful when handling batteries, they will be hot after running.
- Replace any batteries that have been dented or have frayed wires, short circuits can cause fire.
- Be sure to keep your R/C model clean of excess dirt and grease, this will increase the life.

Equipment needed



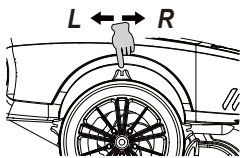
Receiver Connection



Radio Function & Operations

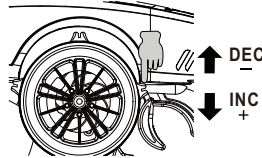
Steering Trim

To be used for centering the steering.

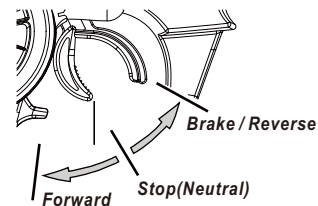


Steering Dual Rate

To be used to adjust steering servo throw.

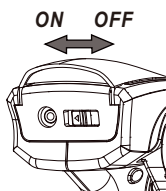


Throttle Trigger



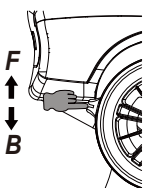
To be used for throttle operation.

Power Switch



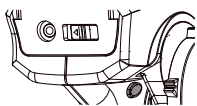
Throttle Trim

To be used for centering the throttle.



3CH Switch

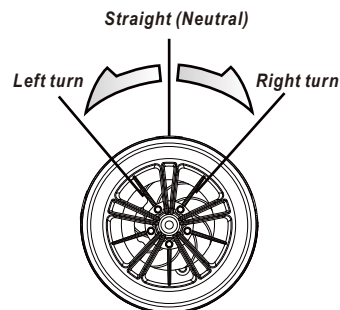
This switch is used for optional parts.



Antenna

Built-in

Steering Wheel



Attention



Note Direction



Do not mix batteries of different ages or types.

Bind Switch

Programming a receiver to recognize the code of only one specific transmitter.

Programming

Selecting menus and programming the transmitter.

D/R Steering Dual Rate

To be used to adjust steering servo throw.

REV Reverse Switch

Adjustment the throttle and steering when it is reverse.

EPA End Point / EPA

End point adjustments allow you to set the limits of all channels.

EXP Exponential

To be used to adjust steering and throttle channel control exponential.

TRM Servo Trim

To be used for centering the steering and throttle.

ABS Anti-Lock Braking System

Primarily used on gasoline or glow models that feature a throttle servo.

STM Servo Sub-Trim

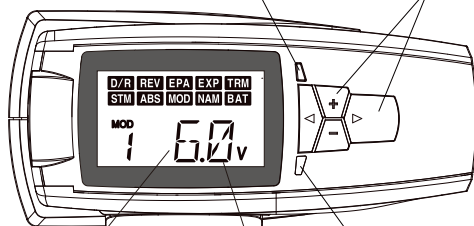
To be used for centering the steering and throttle.

MOD Model Select

Allows you to store and retrieve programming Data for any model 0 through 9.

NAM Model naming

Allows you to name each of the 10 different models.



Programming Window

Voltage Monitor

Battery Level Indicator



Exchange Batteries

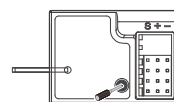
When the battery level indicator(LED) blinks in red, replace the batteries with new ones immediately.

Binding



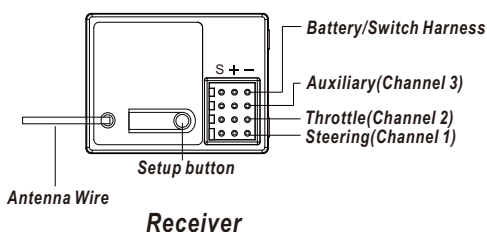
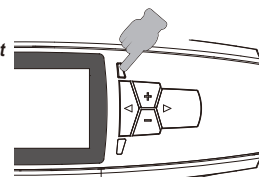
Before beginning the binding process, connect the switch harness, servos, and the receiver battery to your MR-3D receiver. Make sure that both the transmitter and the receiver are turned OFF.

1. Turn the transmitter ON.
2. Press and hold the receiver setup button, then turn the power switch on the ON position. The receiver LED will flash quickly. Release the setup button after 1 second.
3. Press and hold the binding button on the transmitter for 1 second until the LED on the receiver is continuously lit.





Fail-safe setup


1. Move the steering wheel or throttle trigger to the position where you want the servo to move, press and hold the receiver setup button for 2 second until the red LED on the receiver flash slowly, then press and hold the receiver setup button again within 5 seconds until the receiver LED is continuously lit, that's mean the F/S function has been correctly set.
2. Verify if the failsafe function has been correctly set. Turn off the transmitter, then check if the servos moves to the position that you set.





1 Gear Box

-  **QS2217**
M4×6mm ×1
-  **QS2218**
M4×14mm ×4
-  **QS2219**
M4×16mm ×10
-  **QS2201**
M4 Locking Washer ×1

-  **QS2096**
Bearing 12×24×6mm ×2

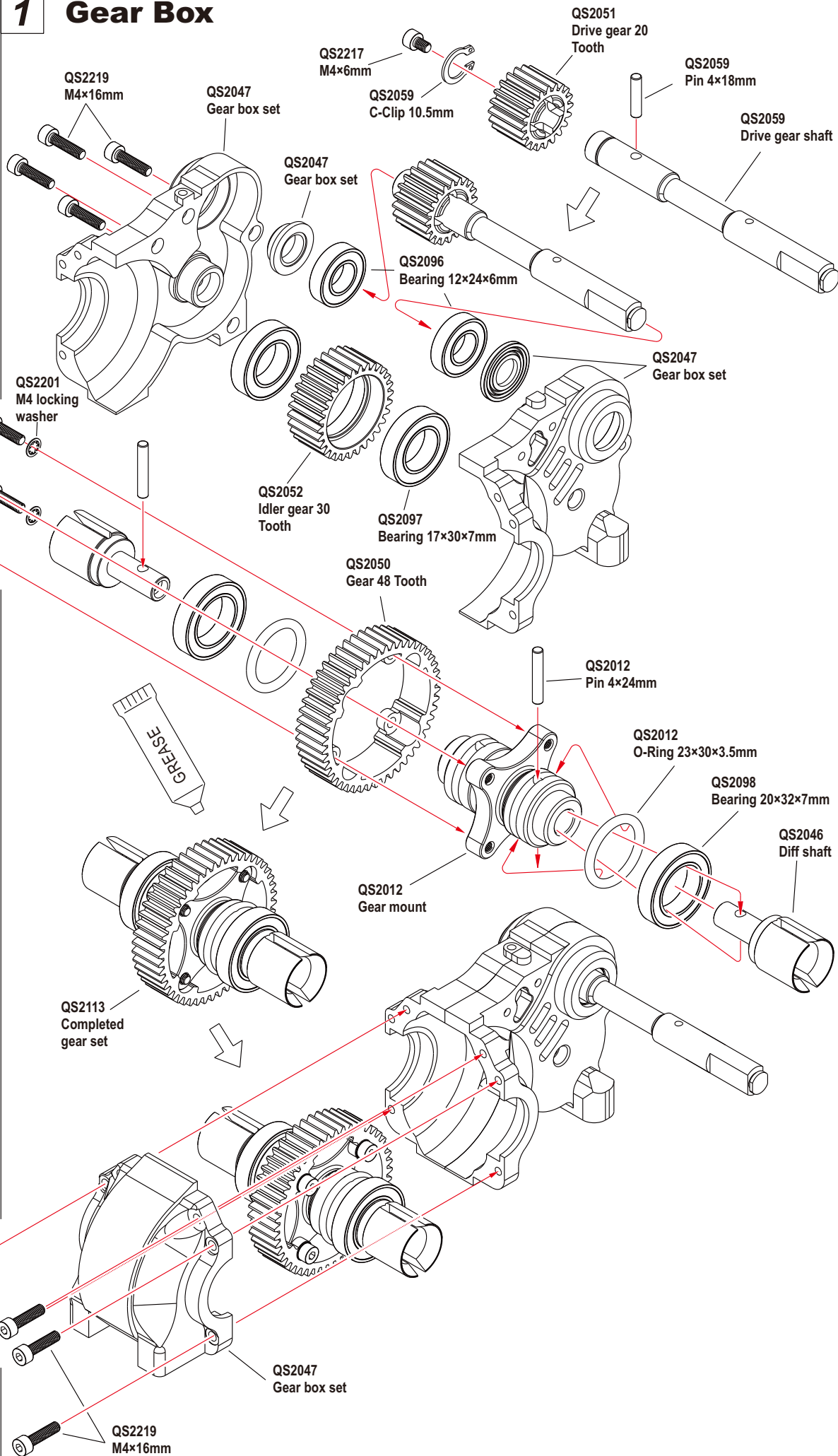
-  **QS2097**
Bearing 17×30×7mm ×2

-  **QS2098**
Bearing 20×32×7mm ×2

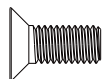
-  **QS2012**
O-Ring 23×30×3.5mm ×2

-  **QS2059**
PIN 4×18mm ×1

-  **QS2012**
PIN 4×24mm ×2



2 Chassis Assembly



QS2232
M5×12mm

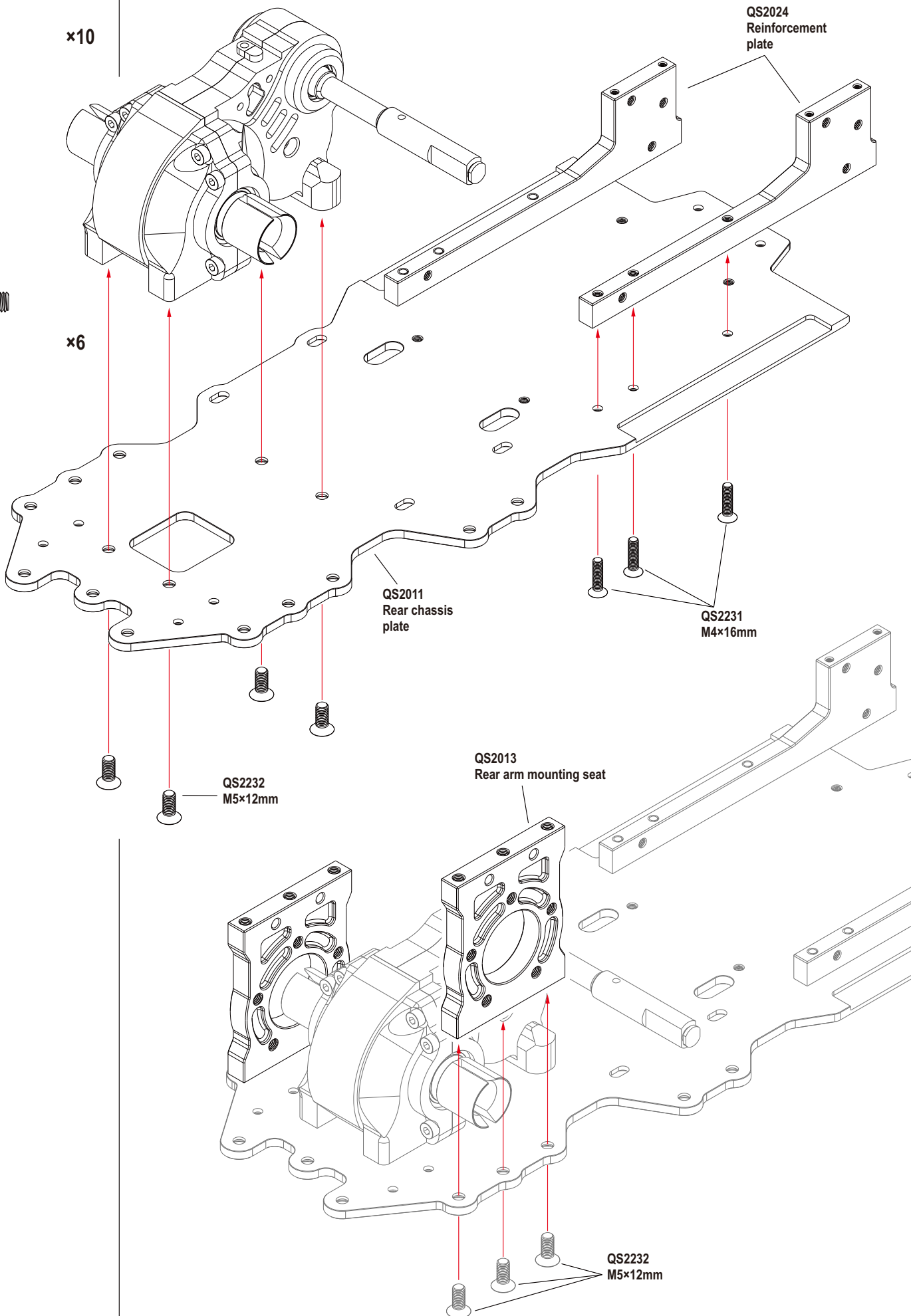
×10



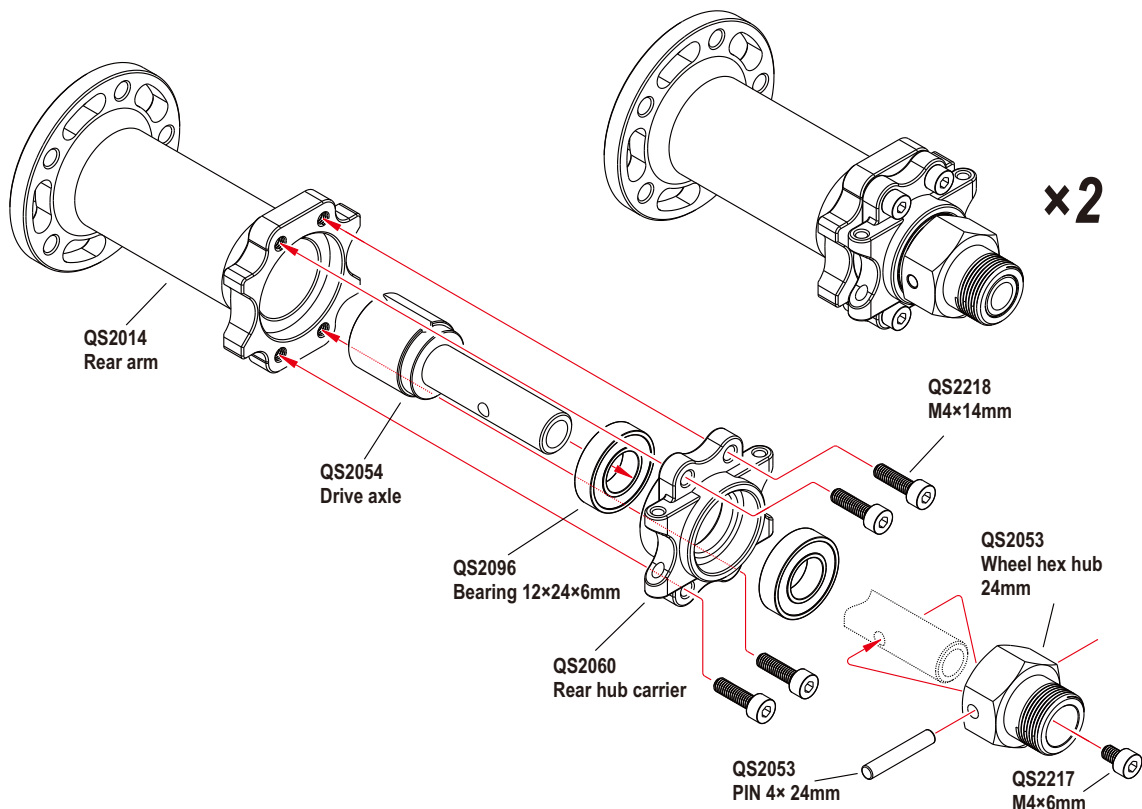
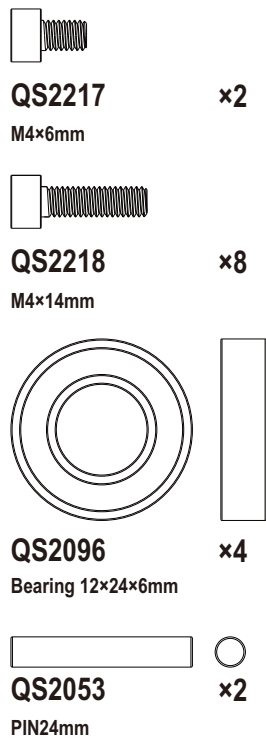
QS2231
M4×16mm

×6

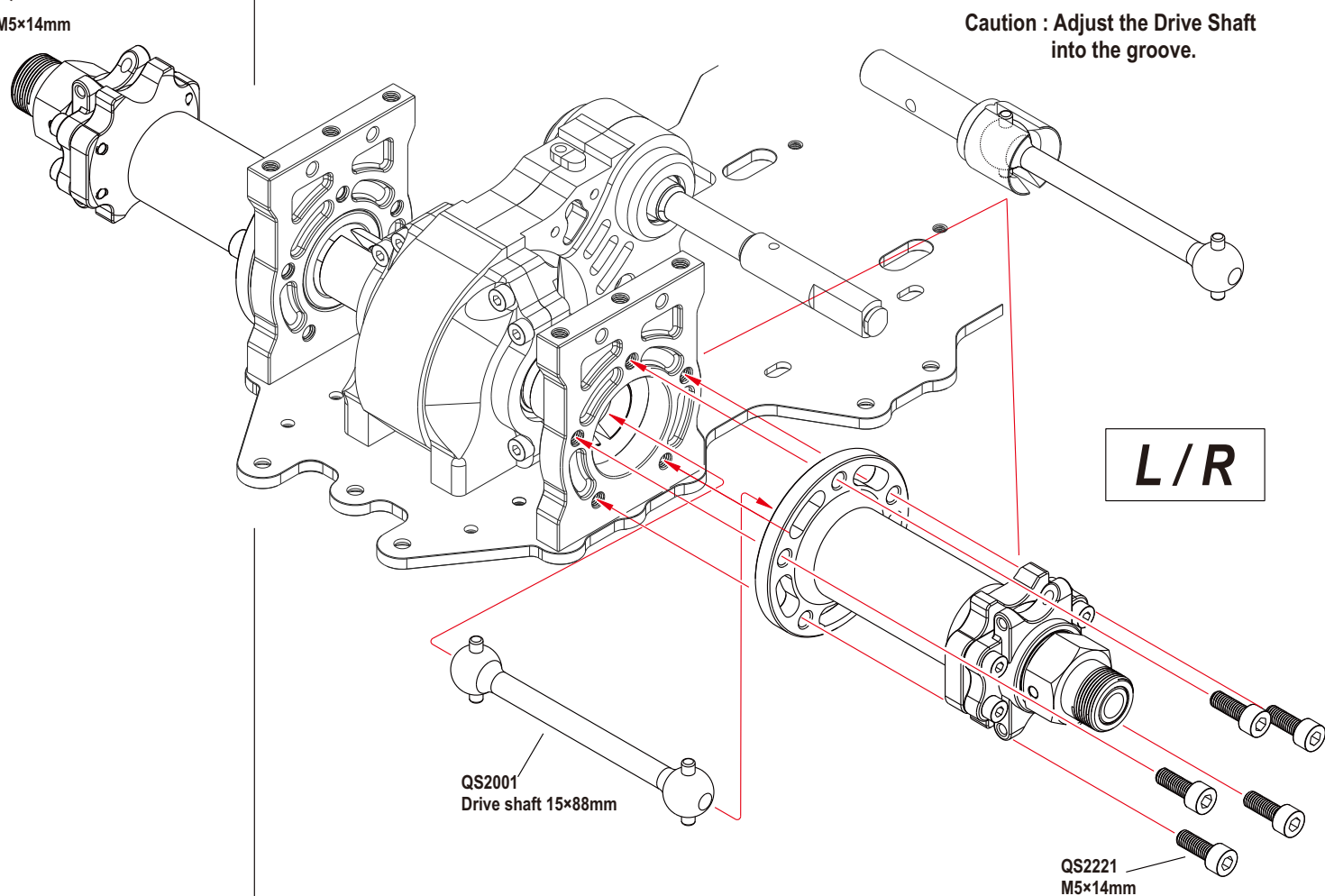
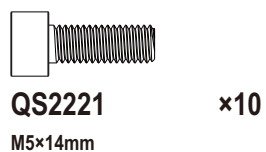
QS2024
Reinforcement
plate

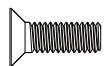


3 Rear Arm



4 Rear Arm





QS2230

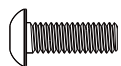
M4×12mm

×4

5

QS2019
Rear wing mounting
seat

QS2230
M4×12mm



QS2212

M4×12mm

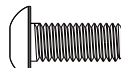
×4

6

QS2019
Rear wing mounting
seat

QS2129
Rear upper plate

QS2212
M4×12mm



QS2214

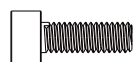
M5×12mm

×6

7

QS2214
M5×12mm

8 Motor Assembly



QS2257

M4×12mm

×4



QS2260

M5×5mm

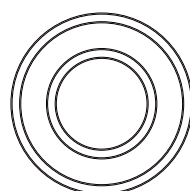
×2



QS2231

M4×16mm

×2



QS2096

Bearing 12×24×6mm

×2



QS2246

M4 Spring Washer

×1



QS2201

M4 Locking Washer

×1



QS2219

M4×16mm

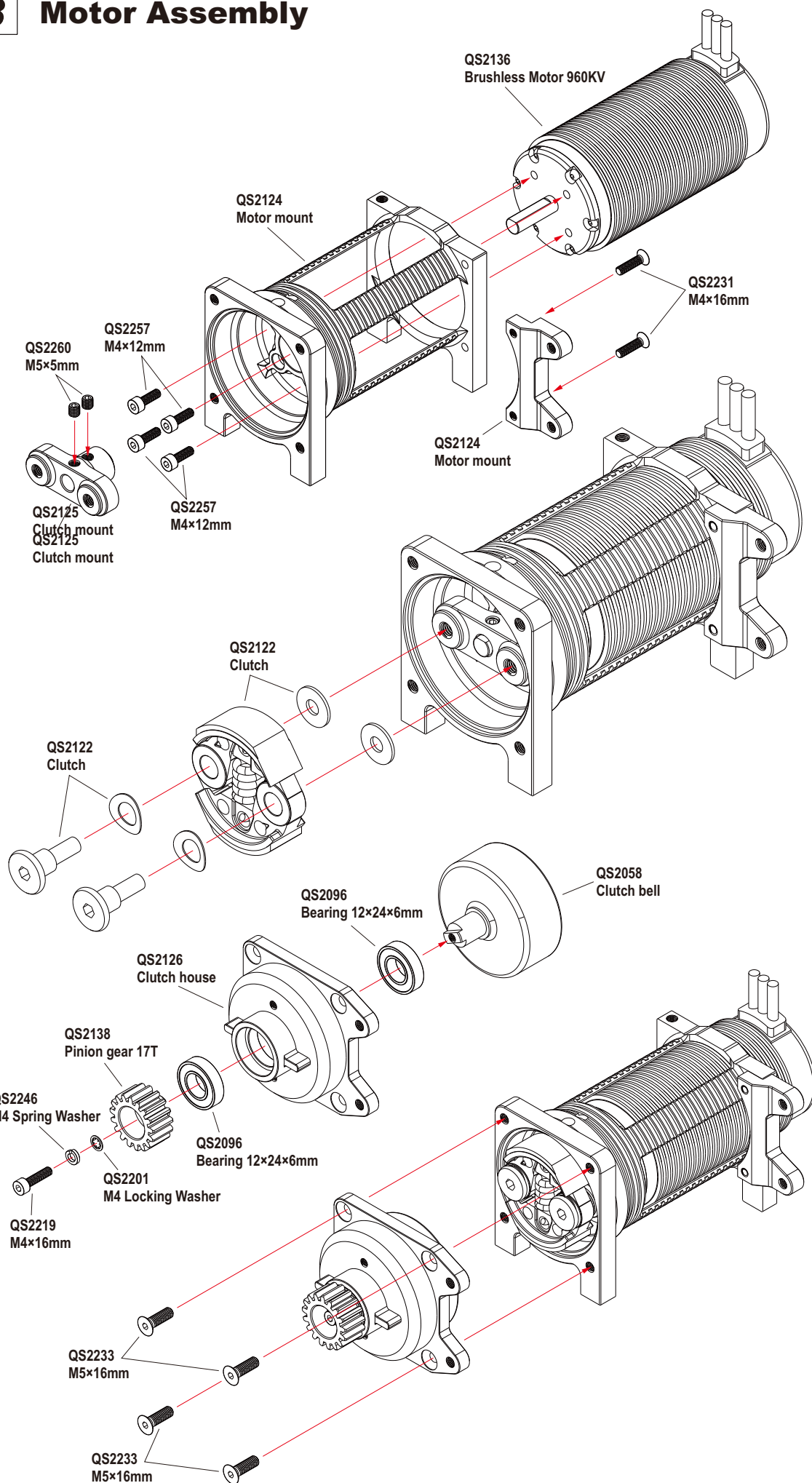
×1



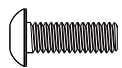
QS2233

M5×16mm

×4



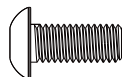
9



QS2212

M4×12mm

×2



QS2214

M5×12mm

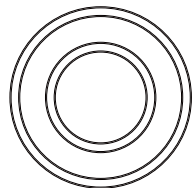
×1



QS2233

M5×16mm

×2



QS2096

Bearing 12×24×6mm

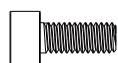
×1



QS2255

M5×8mm

×4



QS2256

M4×10mm

×2



QS2202

E-Clip 7×14×1mm

×1



QS2229

M4×10mm

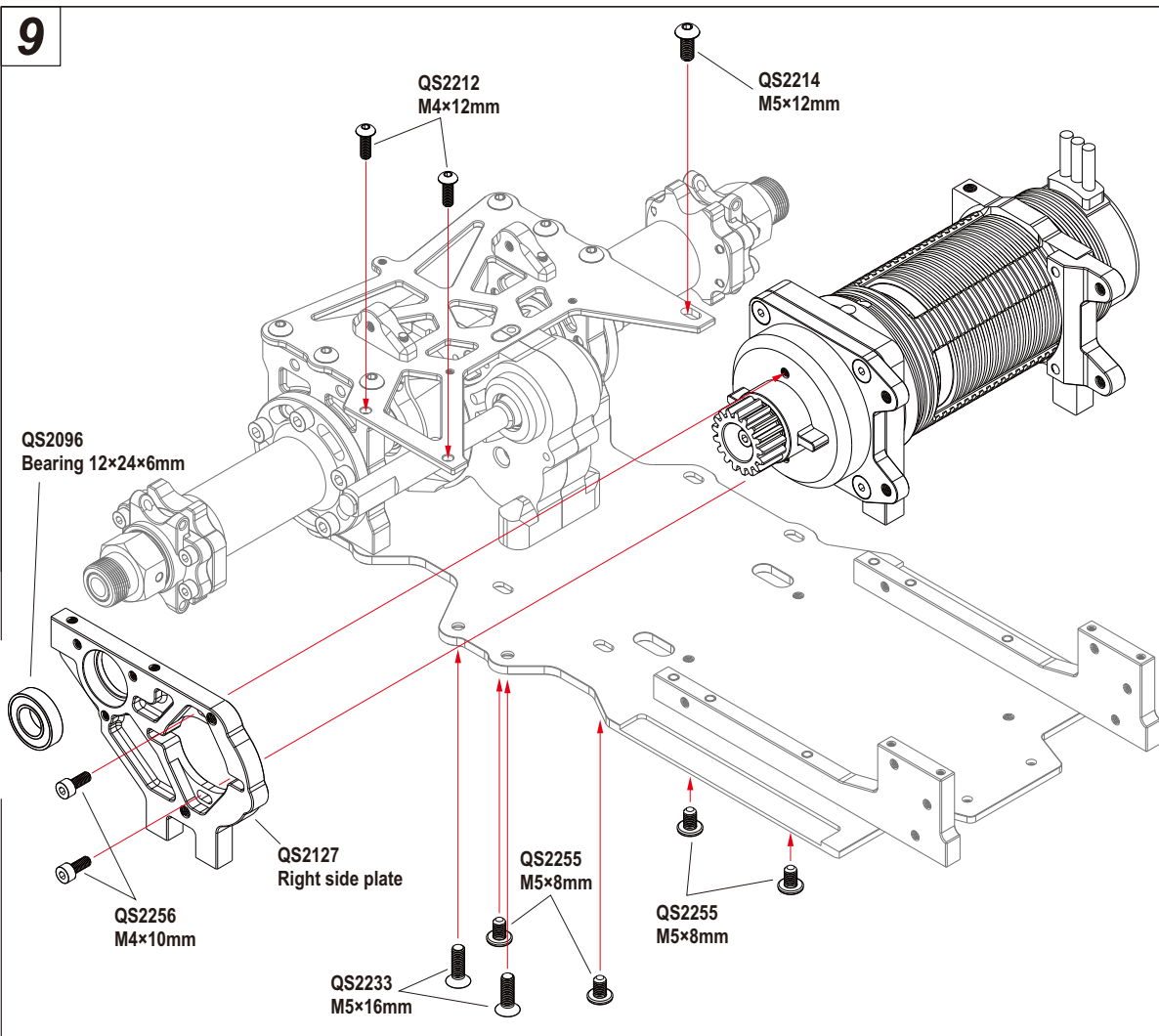
×3



QS2223

M5×20mm

×2



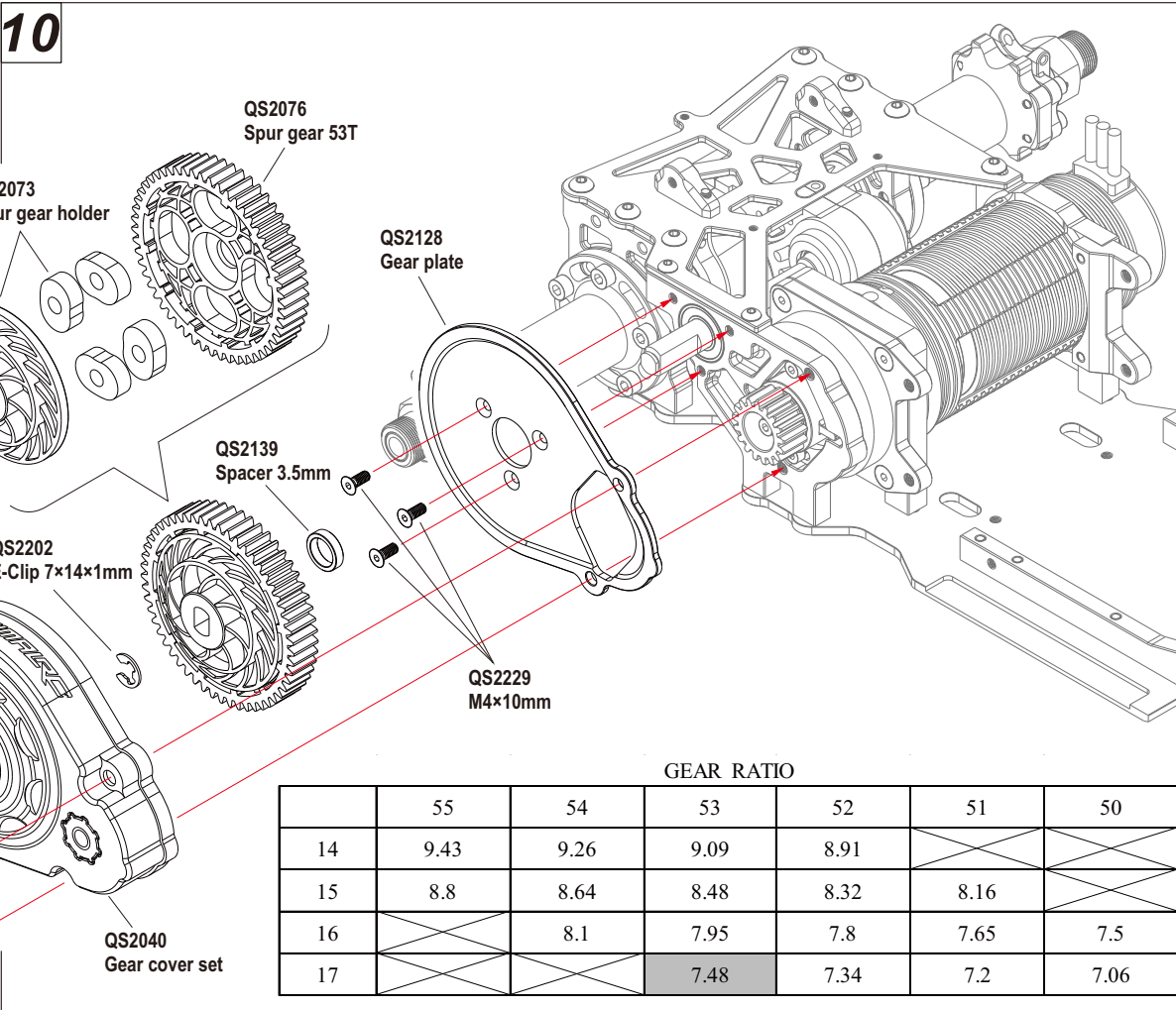
10

×2

×1

×3

×2



GEAR RATIO

| | 55 | 54 | 53 | 52 | 51 | 50 |
|----|------|------|------|------|------|------|
| 14 | 9.43 | 9.26 | 9.09 | 8.91 | | |
| 15 | 8.8 | 8.64 | 8.48 | 8.32 | 8.16 | |
| 16 | | 8.1 | 7.95 | 7.8 | 7.65 | 7.5 |
| 17 | | | 7.48 | 7.34 | 7.2 | 7.06 |

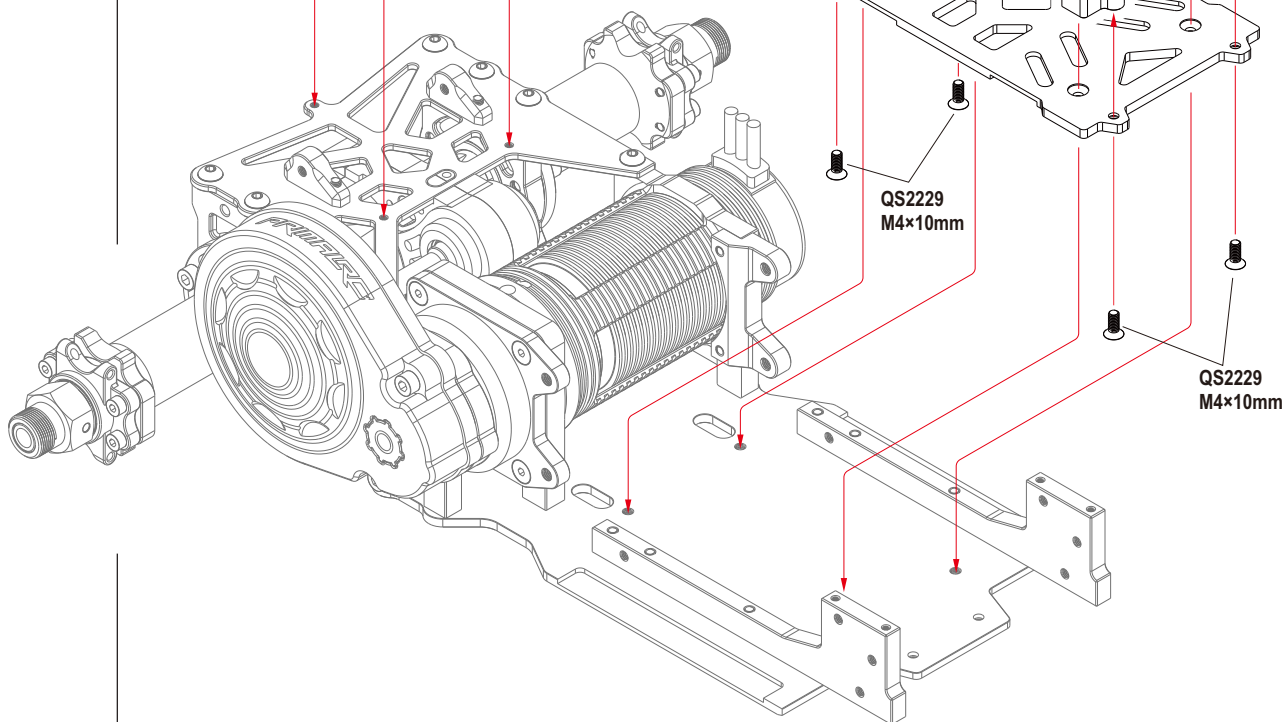
A detailed technical line drawing of a mechanical assembly, possibly a pump or motor. The central component is a large gear with a fan-like structure in the middle, mounted on a shaft. To the left, there is a complex housing or casing with various ports and mounting points. To the right, there is a smaller gear or component. The entire assembly is mounted on a base with several support points. The drawing is a black and white line art, showing the intricate details of the mechanical parts.

12

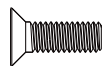


x4

QS2229
M4×10mm



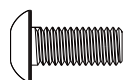
13



QS2230

M4×12mm

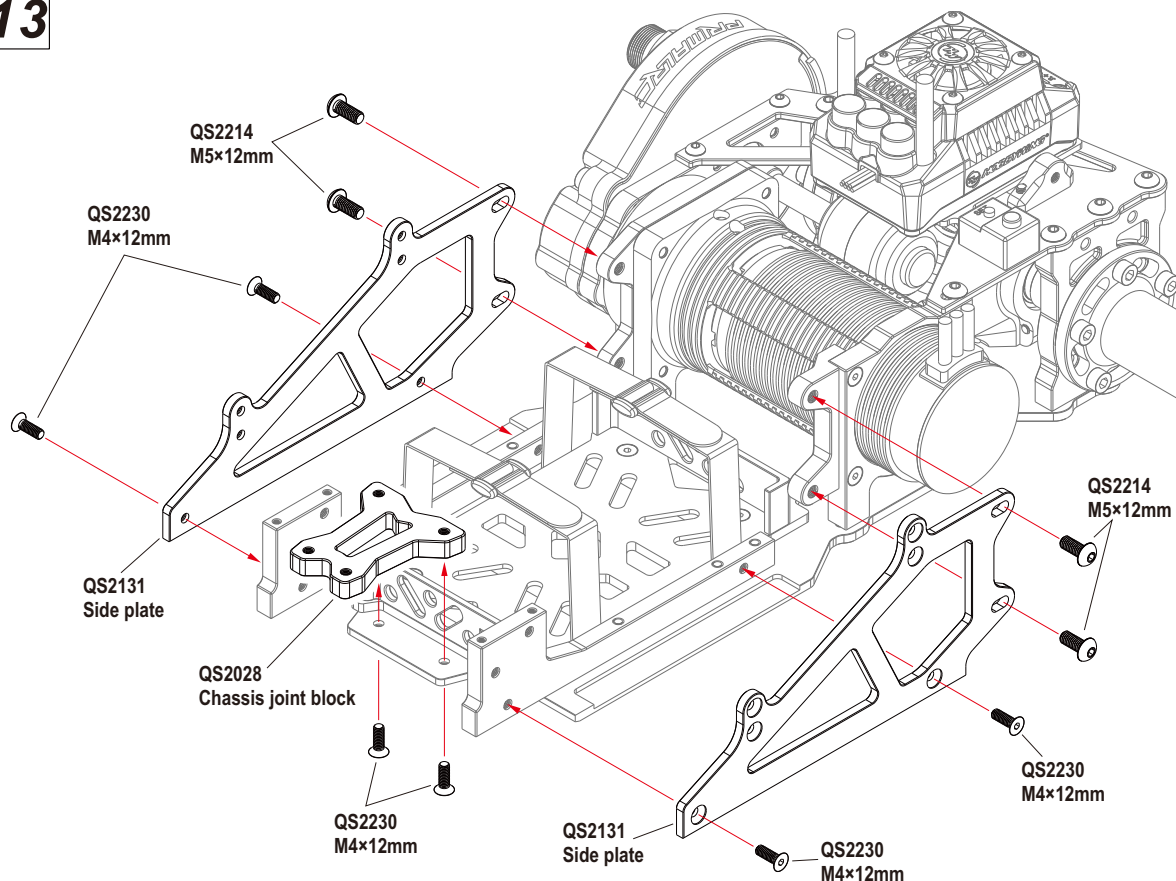
×6



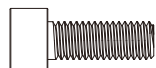
QS2214

M5×12mm

×4



14



QS2221

M5×14mm

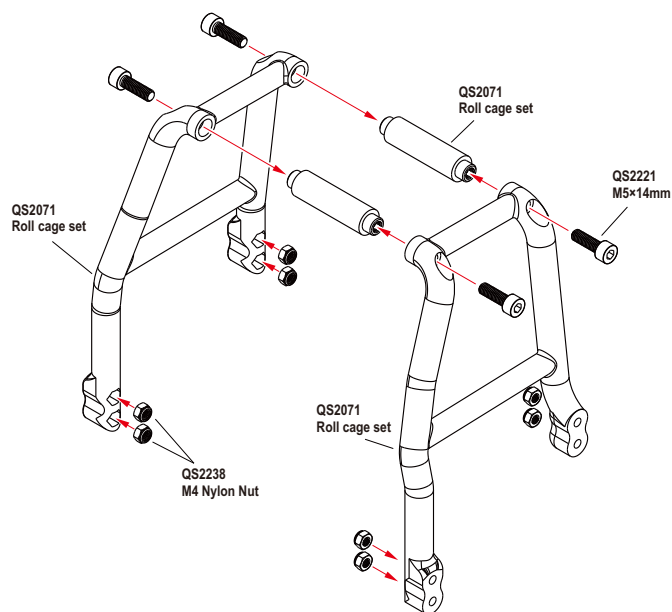
×4



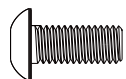
QS2238

M4 Nylon Nut

×8



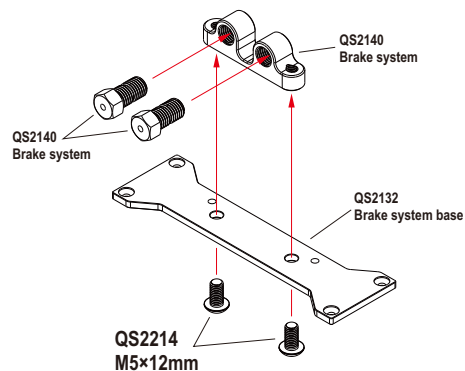
15



QS2214

M5×12mm

×2



16



QS2226
M3×12mm

x4



QS2231
M4×16mm

x8

QS2226
M3×12mm

QS2226
M3×12mm

QS2231
M4×16mm

QS2231
M4×16mm

17



QS2225
M3×10mm

x4



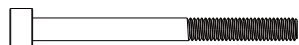
QS2245
M4×4mm

x2



QS2252
M3×20mm

x4



QS2254
M3×35mm

x4

QS2140
Brake system

L / R

QS2225
M3×10mm

QS2140
Brake system

QS2140
Brake system

QS2245
M4×4mm

QS2140
Brake system

QS2140
Brake disk

QS2252
M3×20mm

QS2254
M3×35mm

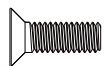
18 Front



QS2231

M4×16mm

×12



QS2230

M4×12mm

×10

QS2025
Chassis reinforcement bar

QS2037
Chassis 1


QS2231
M4×16mm

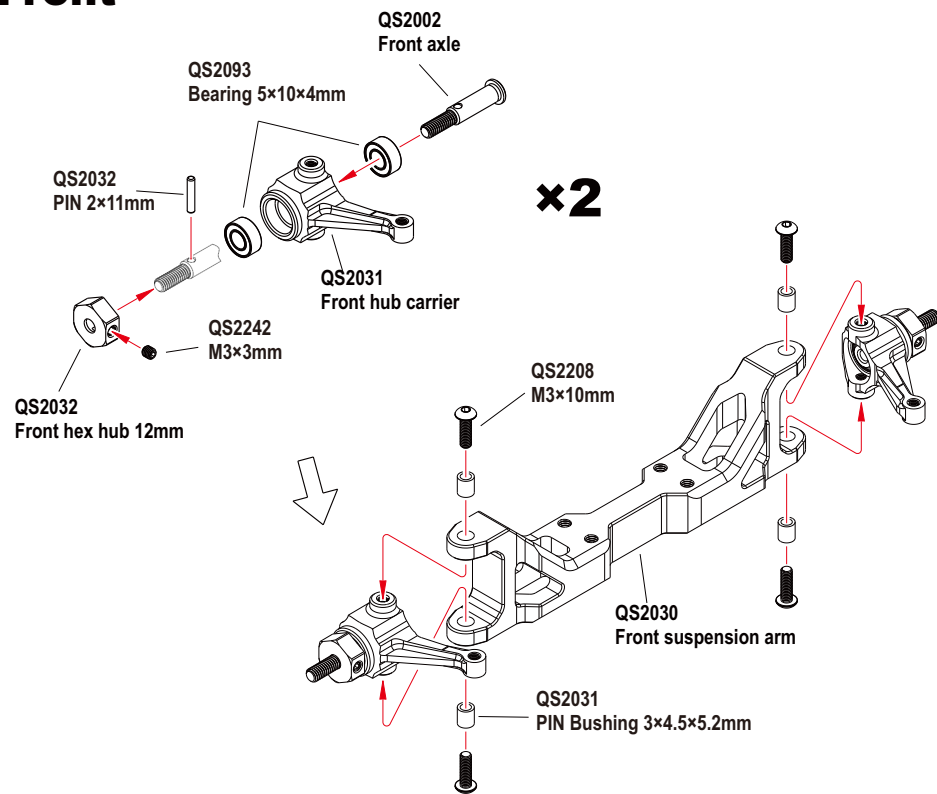
QS2038
Chassis 2

QS2027
Frame cage

QS2230
M4×12mm

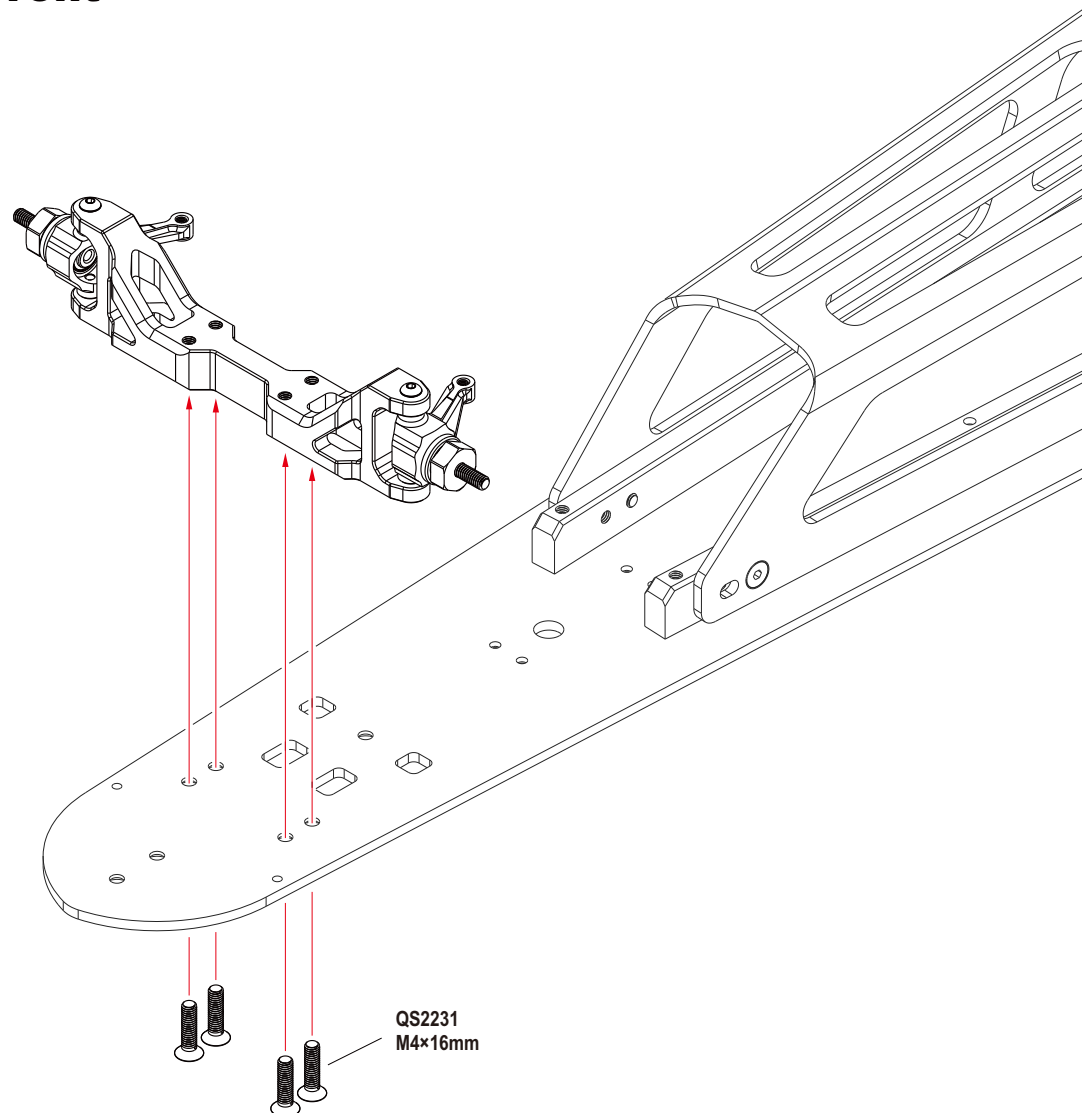
19 Front

-  **QS2242** x2
M3×3mm
-  **QS2032** x2
PIN 2×11mm
-   **QS2093** x4
Bearing 5×10×4mm
-  **QS2208** x4
M3×10mm
-   **QS2031** x4
PIN Bushing 3×4.5×5.2mm



20 Front

-  **QS2231** x4
M4×16mm



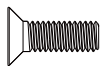
21



QS2224

M3×8mm

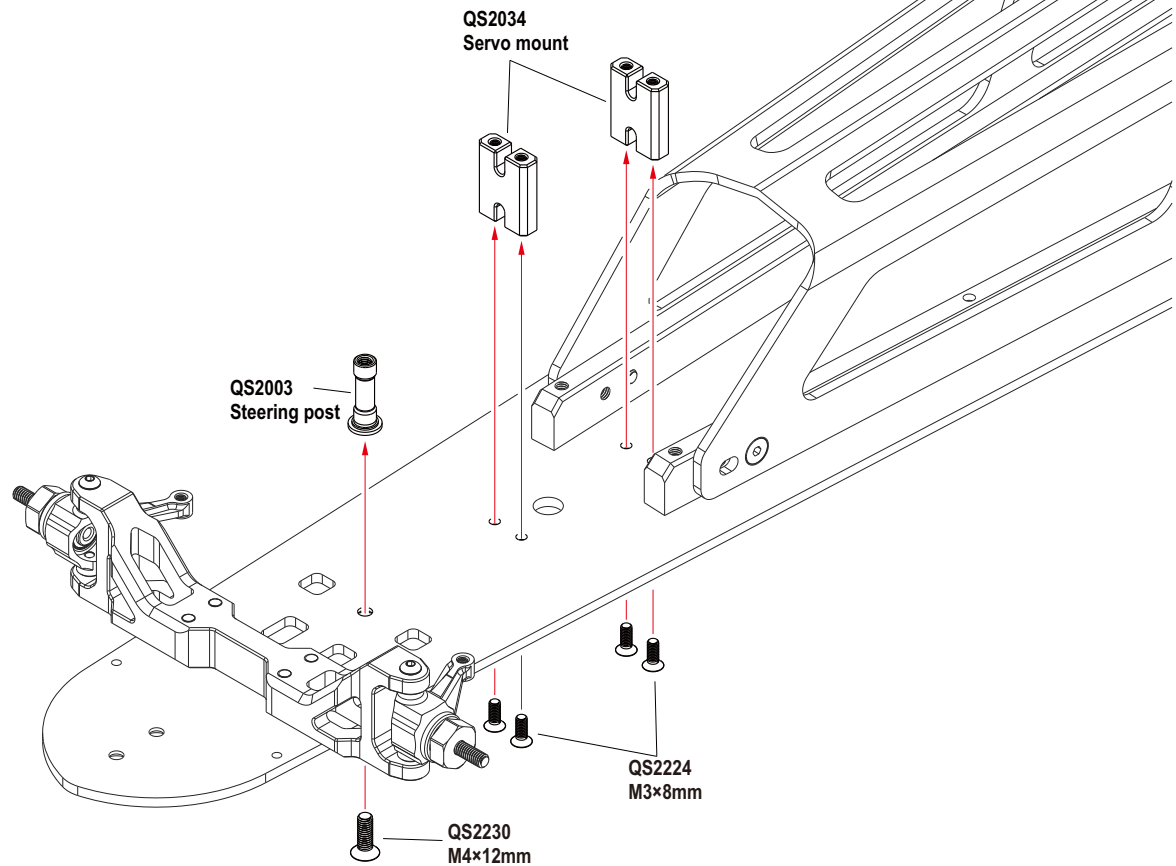
x4



QS2230

M4×12mm

x1



22



QS2207

M3×8mm

x1



QS2208

M3×10mm

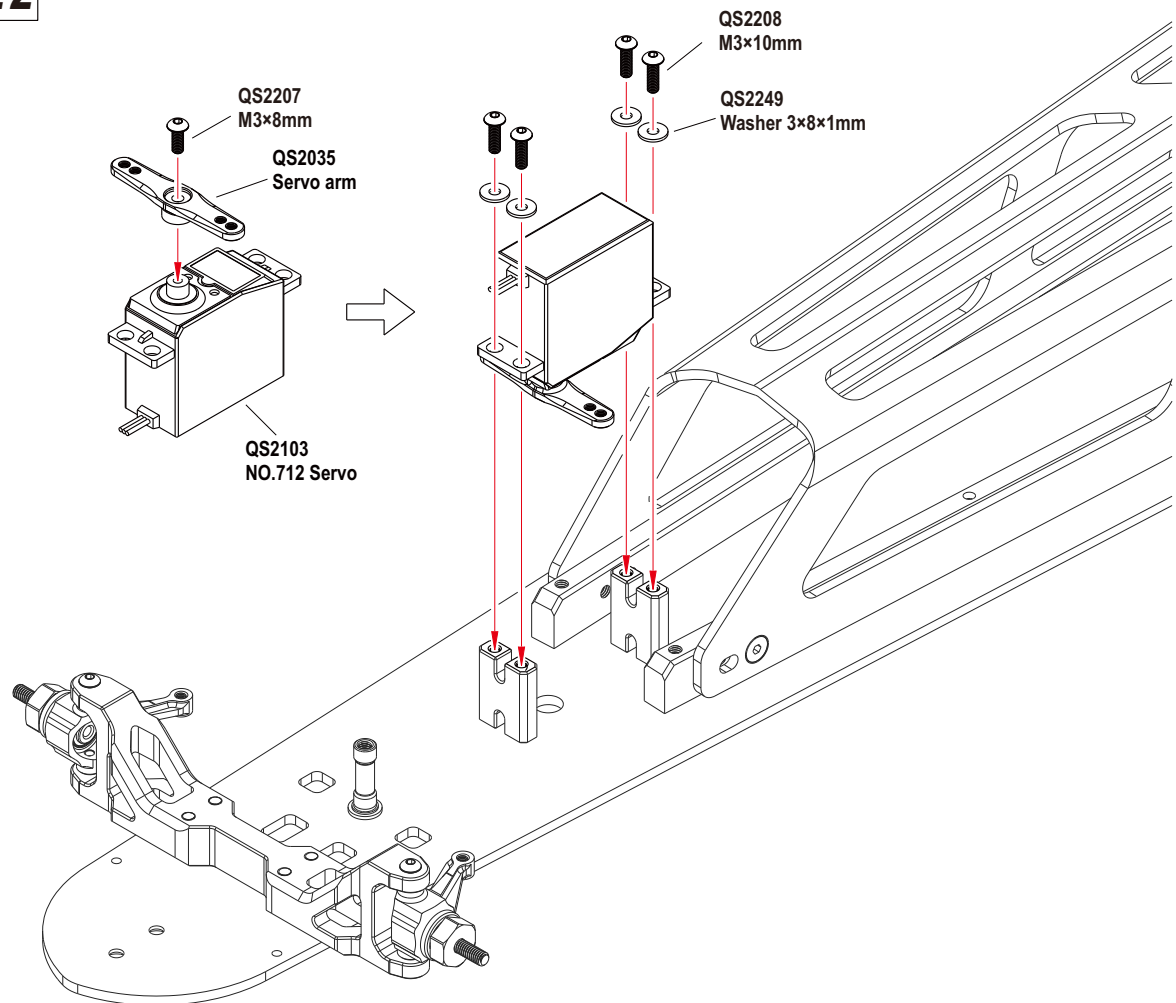
x4



QS2249

Washer 3×8×1mm

x4





QS2094
Bearing 6×10×3mm

×2

QS2062
5.8mm ball

QS2062
5.8mm ball end

QS2062
5.8mm ball

QS2244
M3×30mm

QS2094
Bearing 6×10×3mm

QS2033
Steering system

QS2094
Bearing 6×10×3mm

QS2237
M3 Nylon Nut

QS2062
3mm spacer



QS2237
M3 Nylon Nut

×4



QS2244
M3×30mm

×2



QS2228
M3×18mm

×2



QS2227
M3×16mm

×2

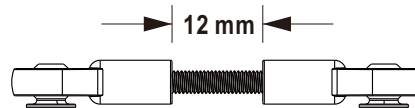
QS2061
5.8mm ball

QS2061
5.8mm ball end

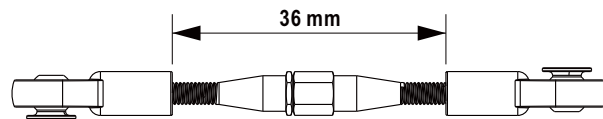
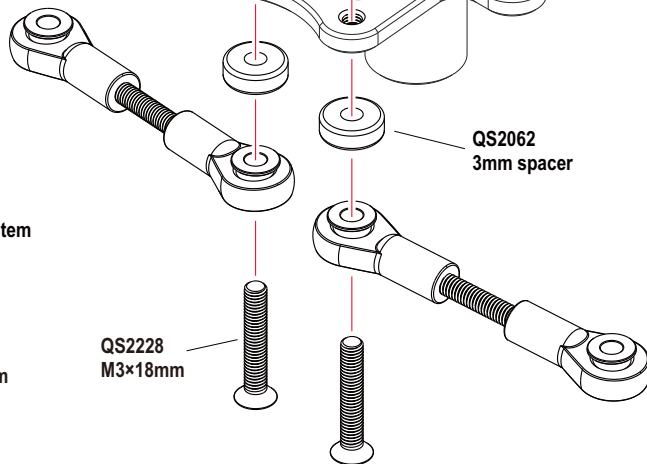
QS2061
5.8mm ball

QS2061
Turnbuckle 3×48mm

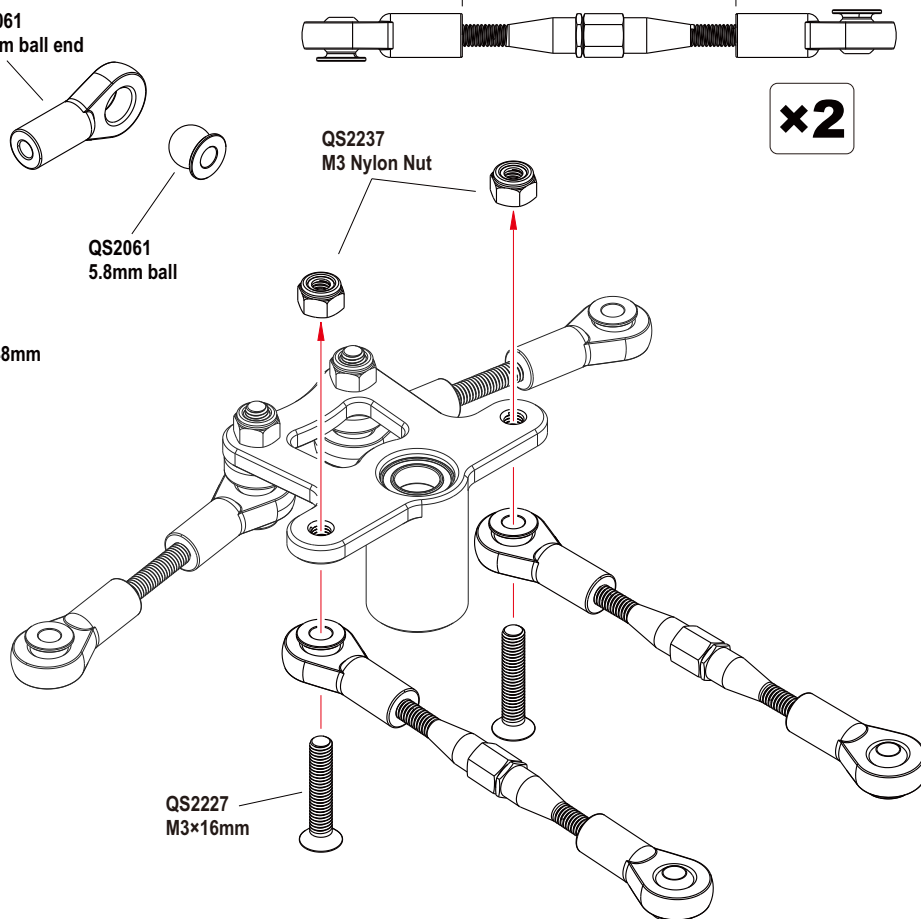
QS2061
5.8mm ball end



×2

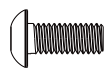


×2



QS2227
M3×16mm

24



QS2211

M4×10mm

×1



QS2237

M3 Nylon Nut

×2



QS2226

M3×12mm

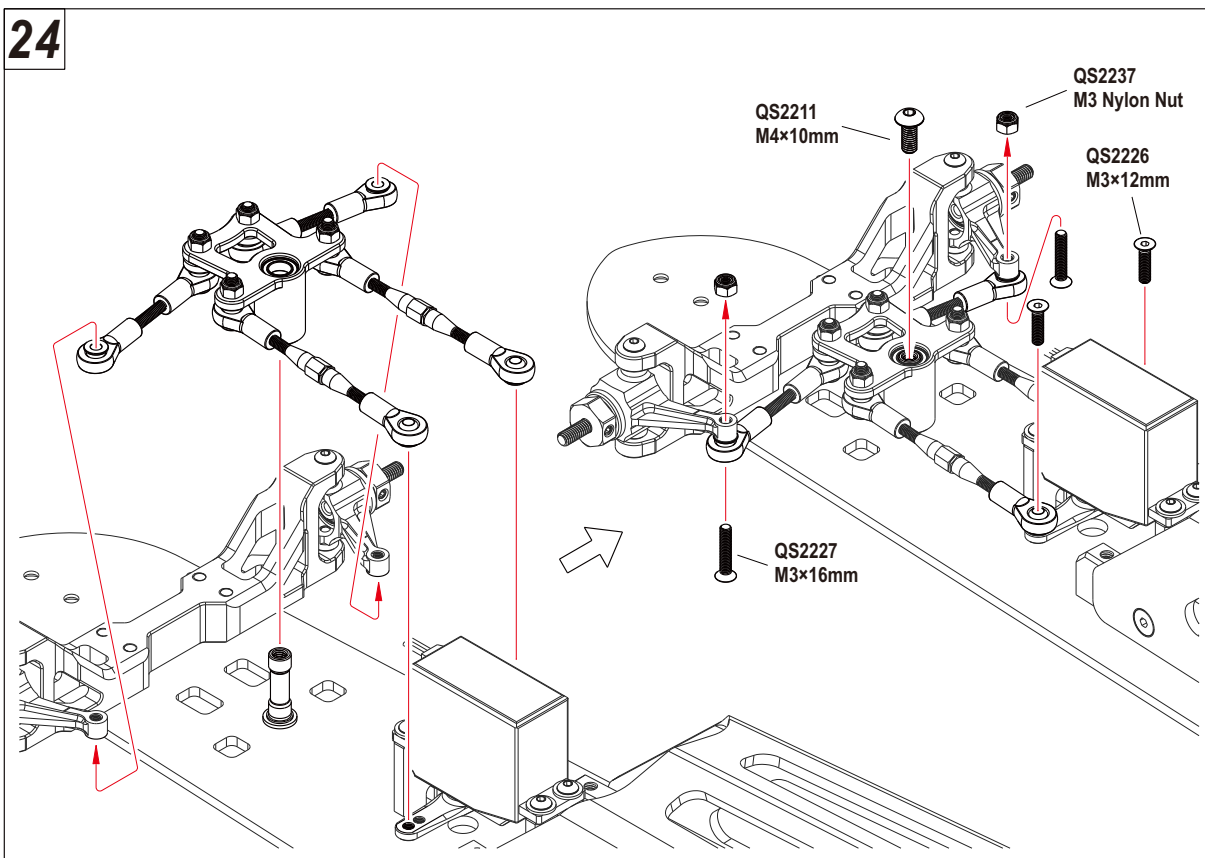
×2



QS2227

M3×16mm

×2



25



QS2206

M3×4mm

×3



QS2241

M4 Flanged Nylon Nut

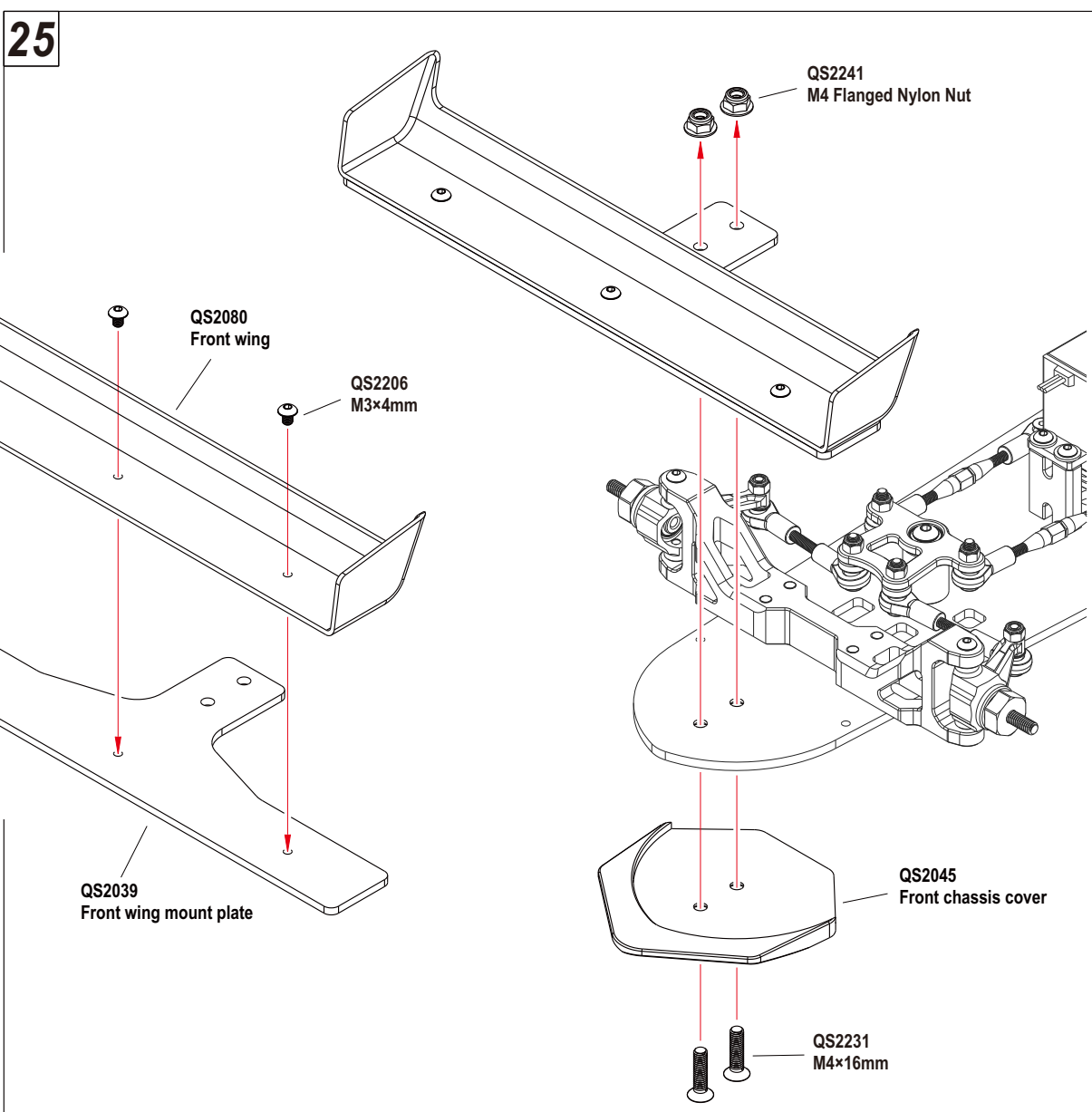
×2



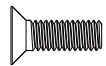
QS2231

M4×16mm

×2



26 Chassis Assembly



QS2230

M4×12mm

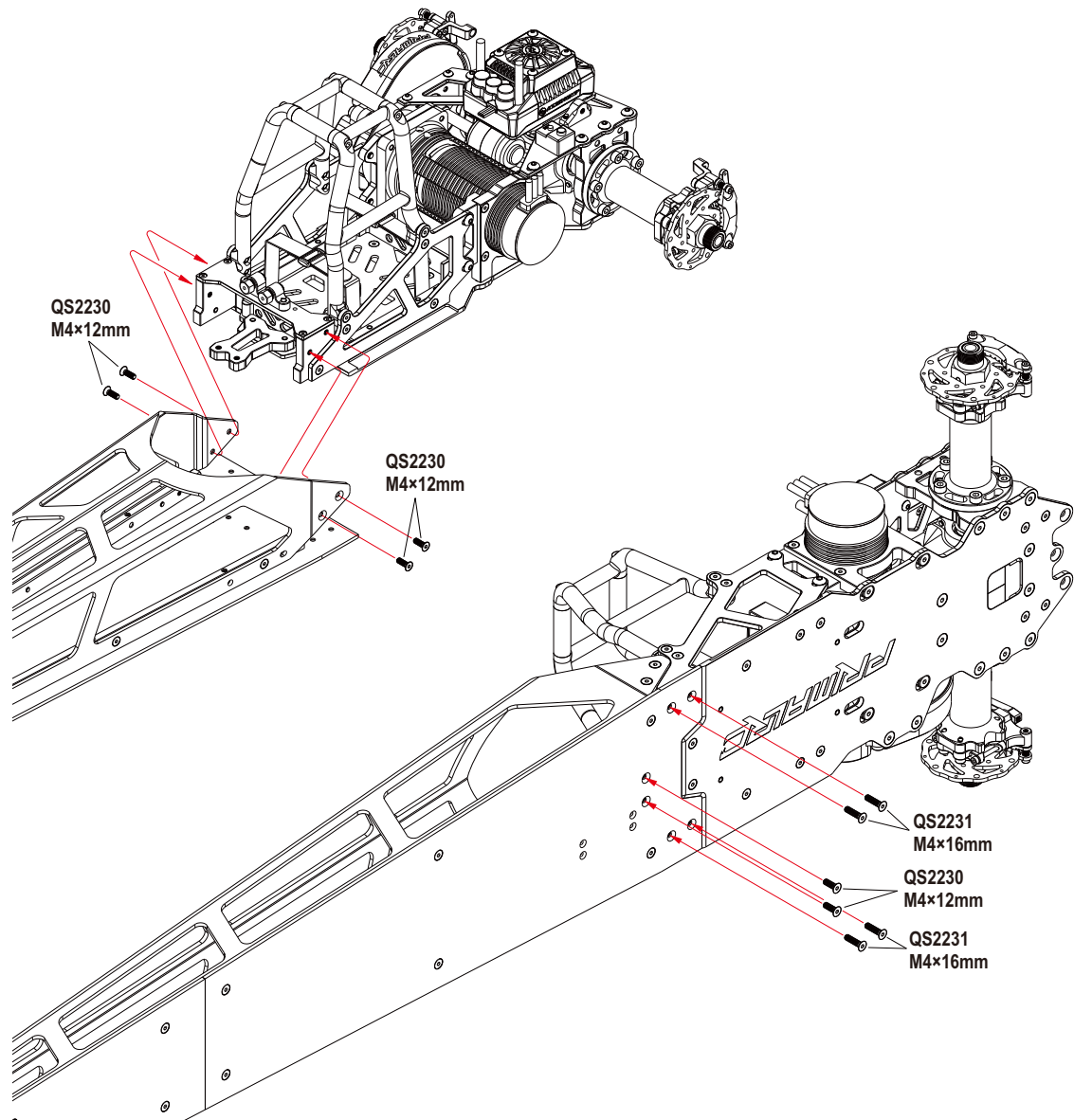
x6



QS2231

M4×16mm

x4



QS2224

M3×8mm

x4



QS2208

M3×10mm

x4

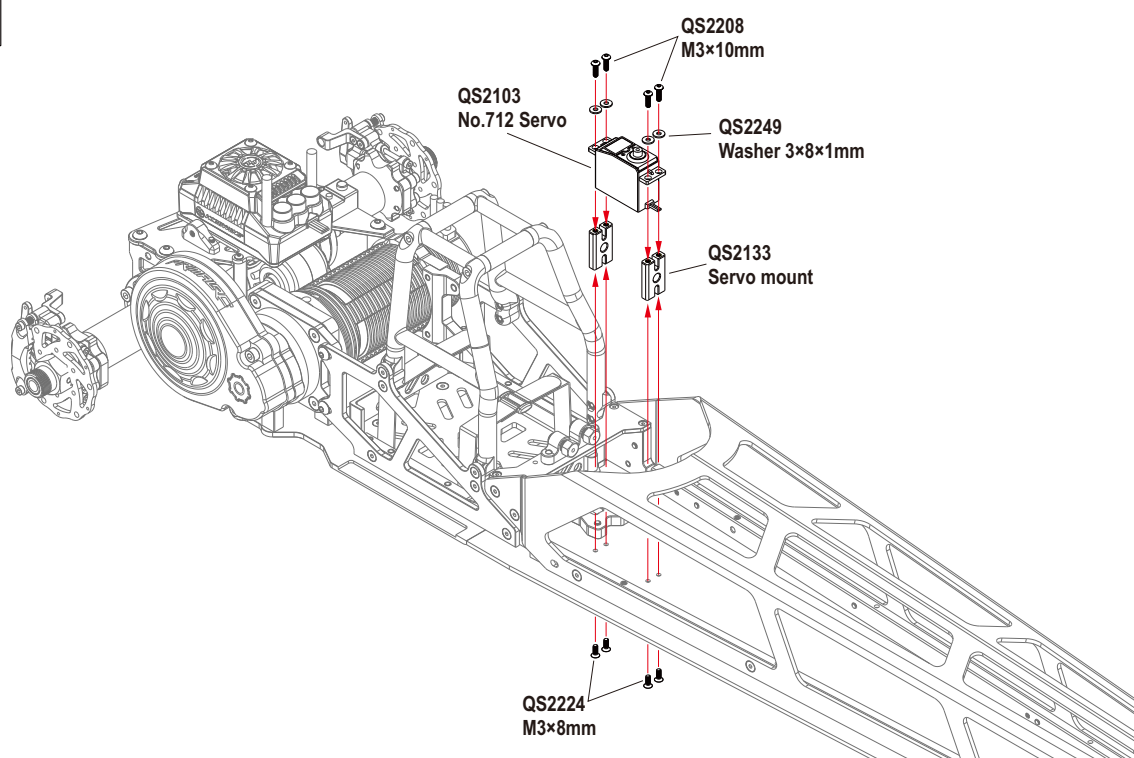


QS2249

Washer 3×8×1mm

x4

27



28 Brake system Assembly



QS2207

M3×8mm

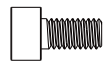
x1



QS2242

M3×3mm

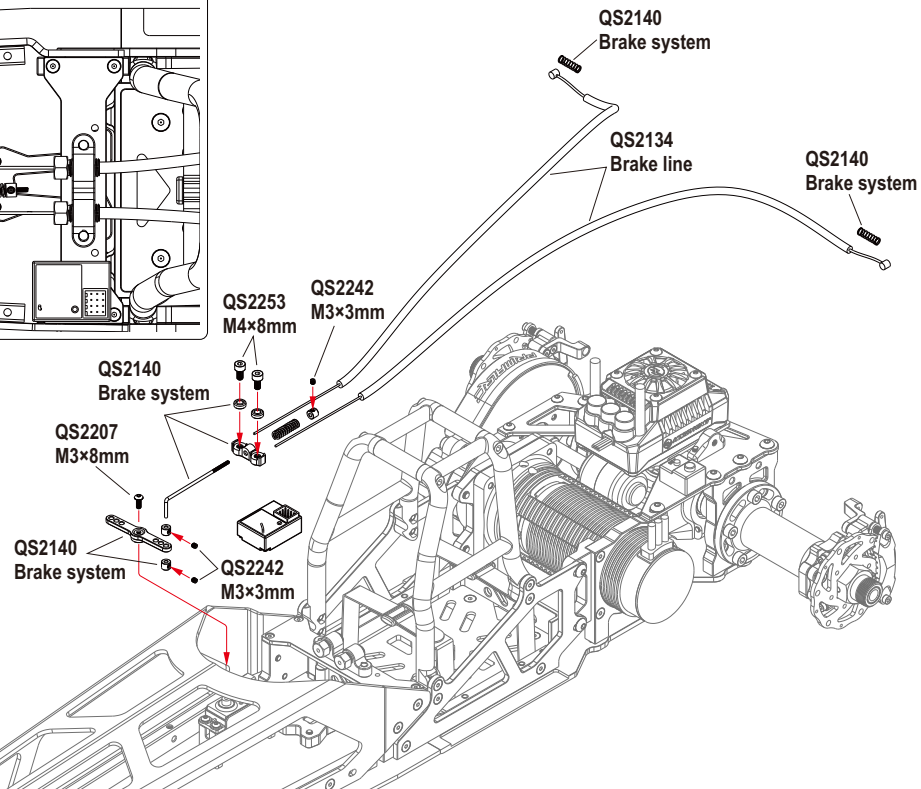
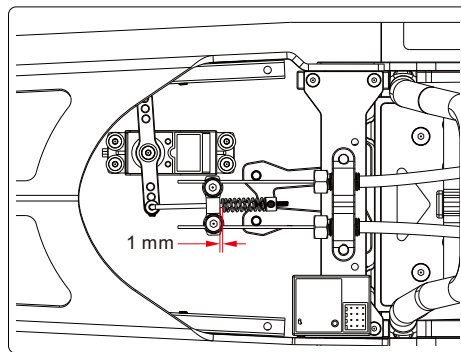
x3



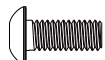
QS2253

M4×8mm

x2



29



QS2211

M4×10mm

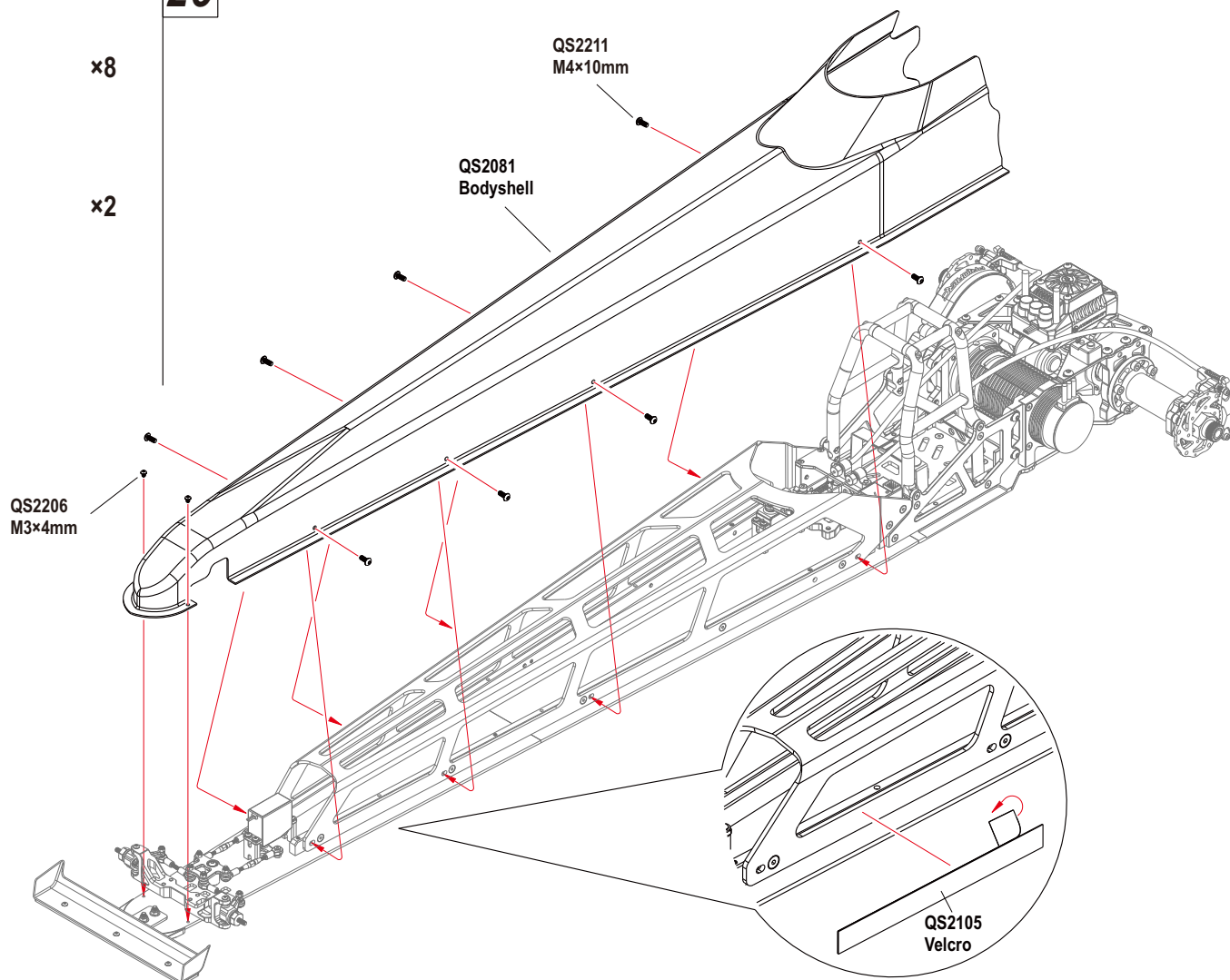
x8



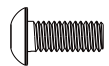
QS2206

M3×4mm

x2



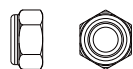
30



QS2211

M4×10mm

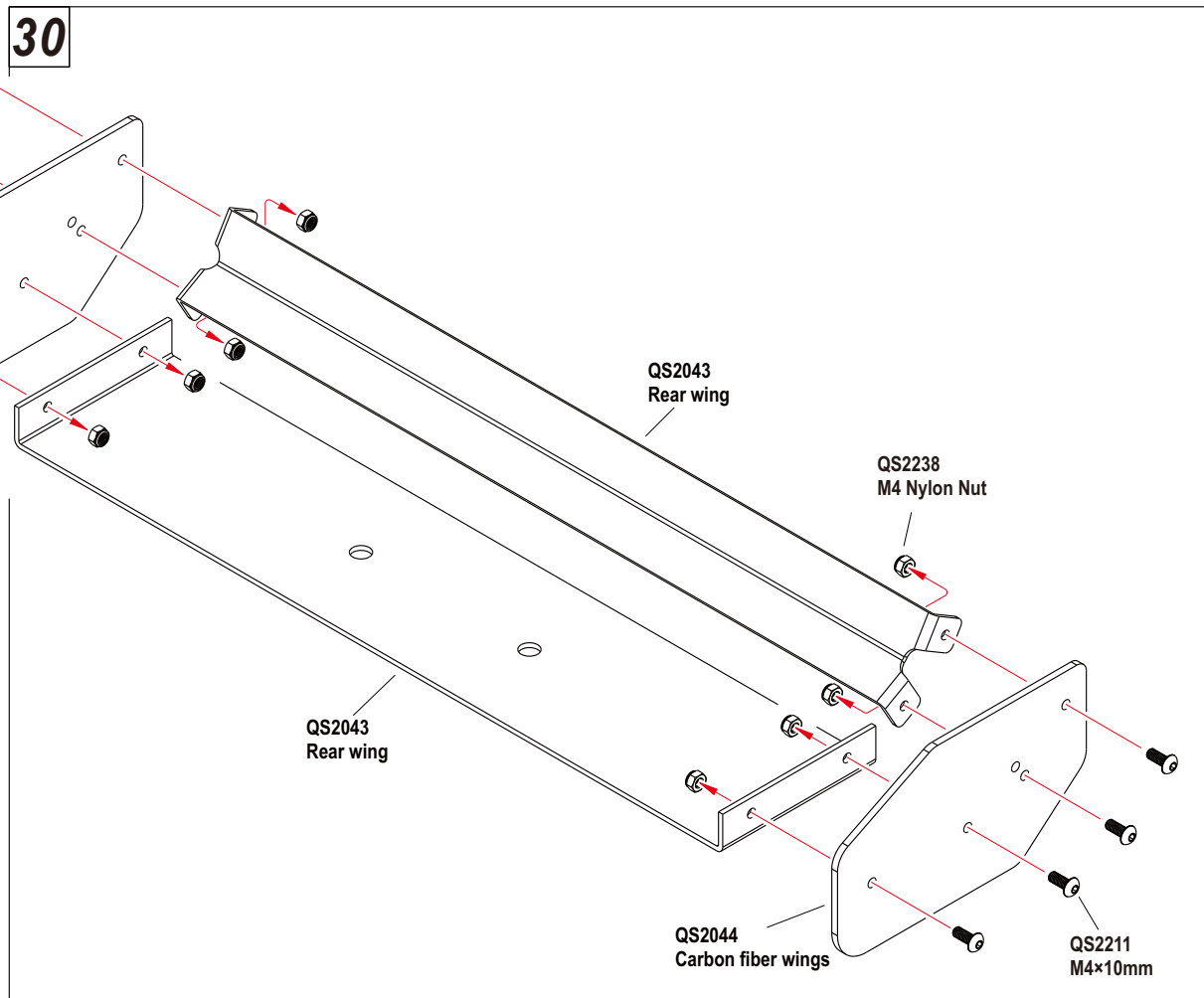
x8



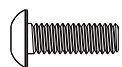
QS2238

M4 Nylon Nut

x8



31



QS2212

M4×12mm

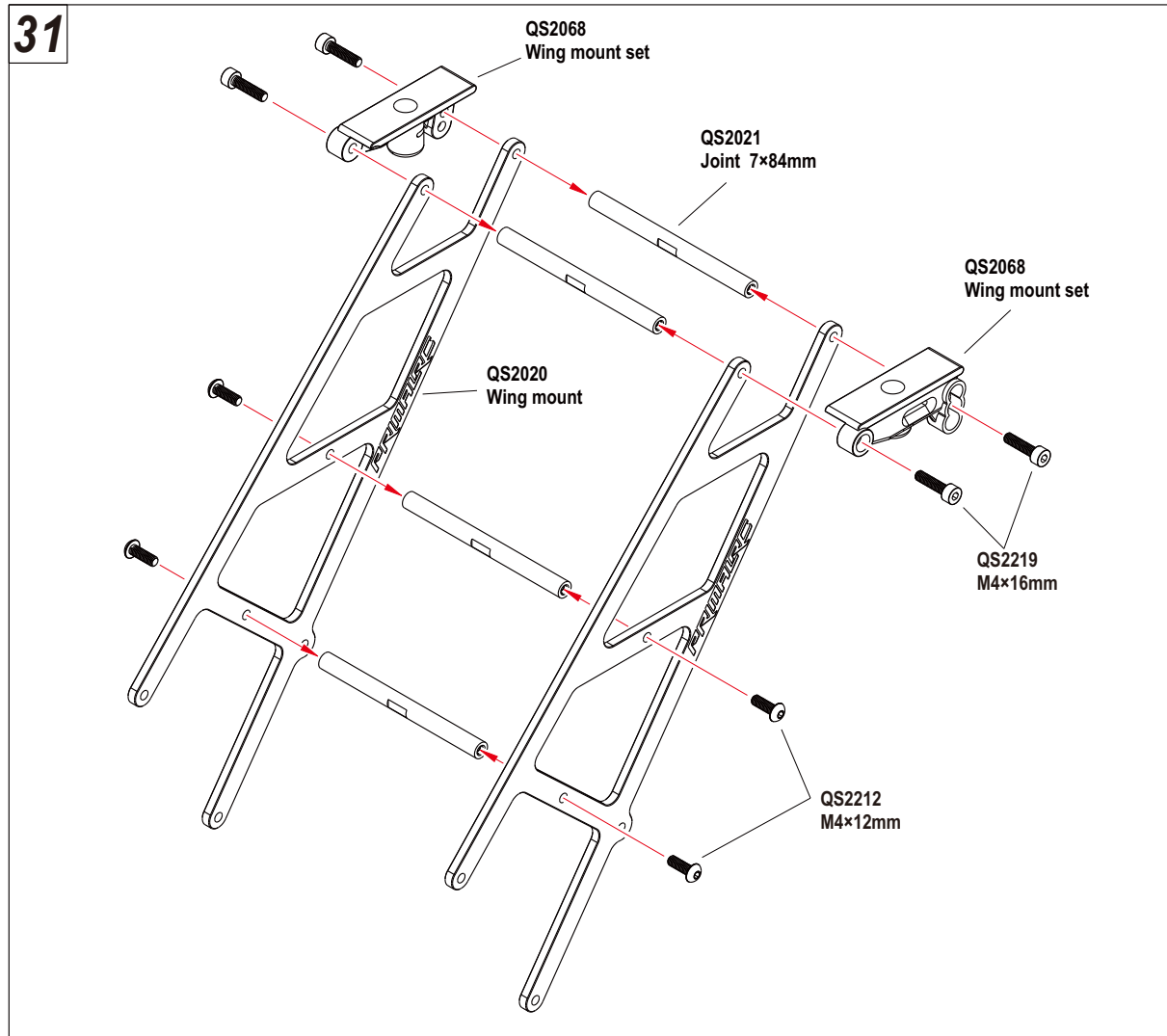
x4



QS2219

M4×16mm

x4



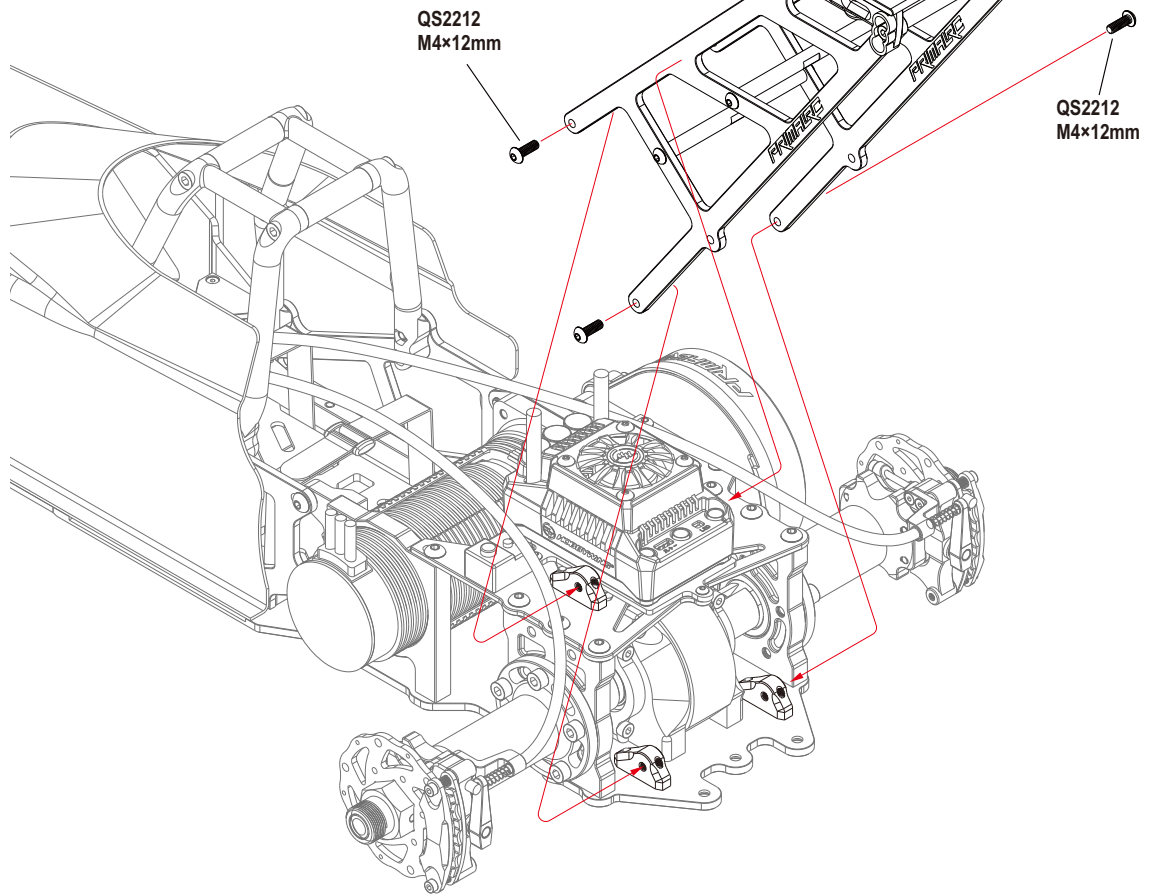
32



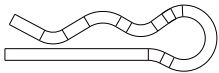
QS2212

M4x12mm

x4



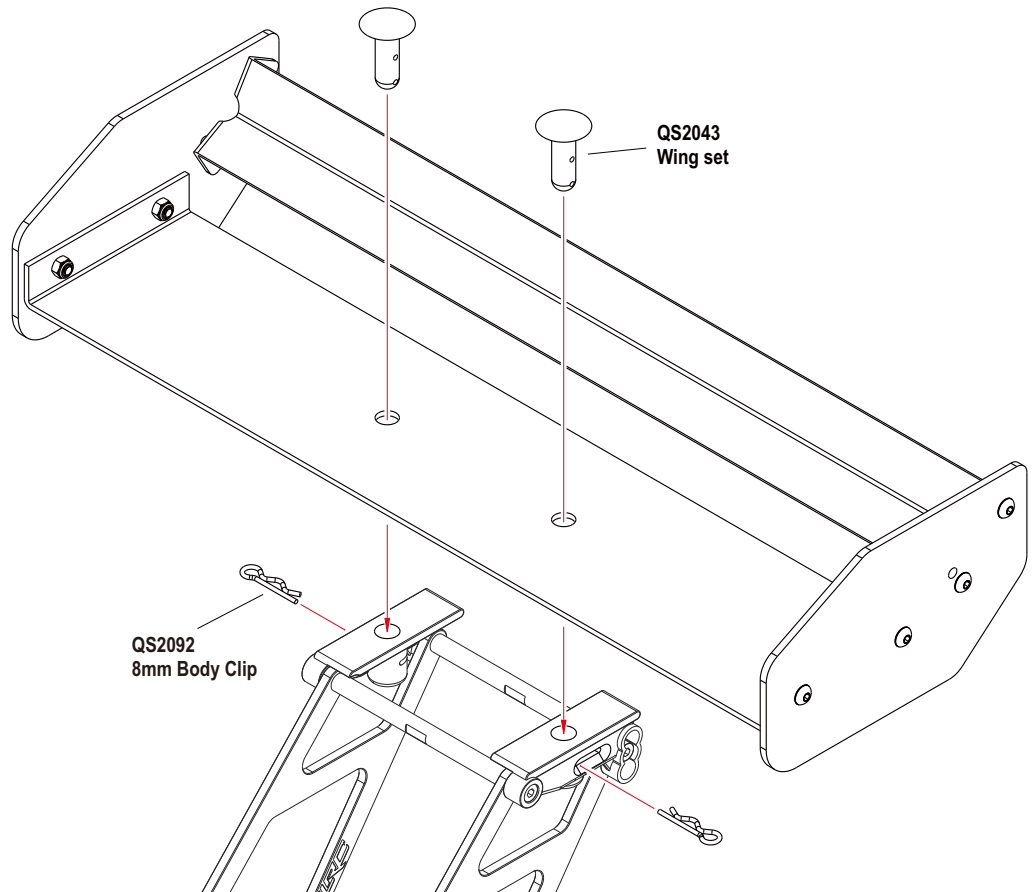
33



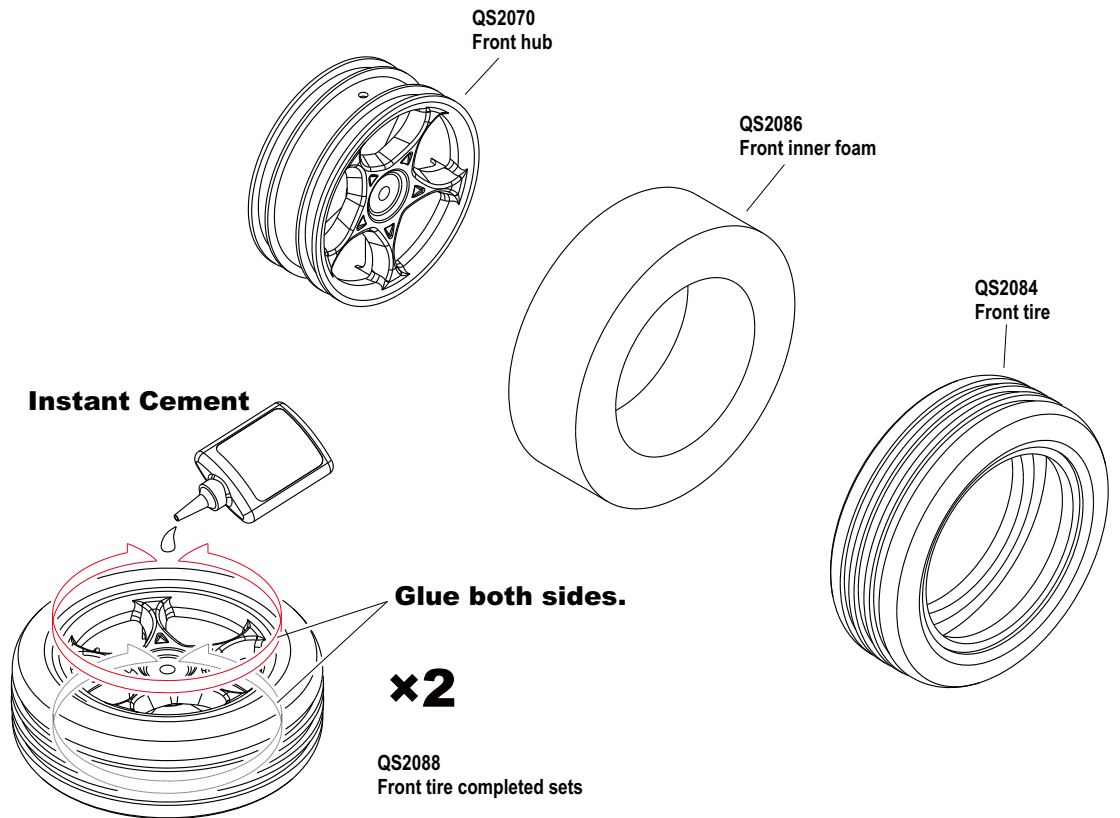
QS2092

8mm Body Clip

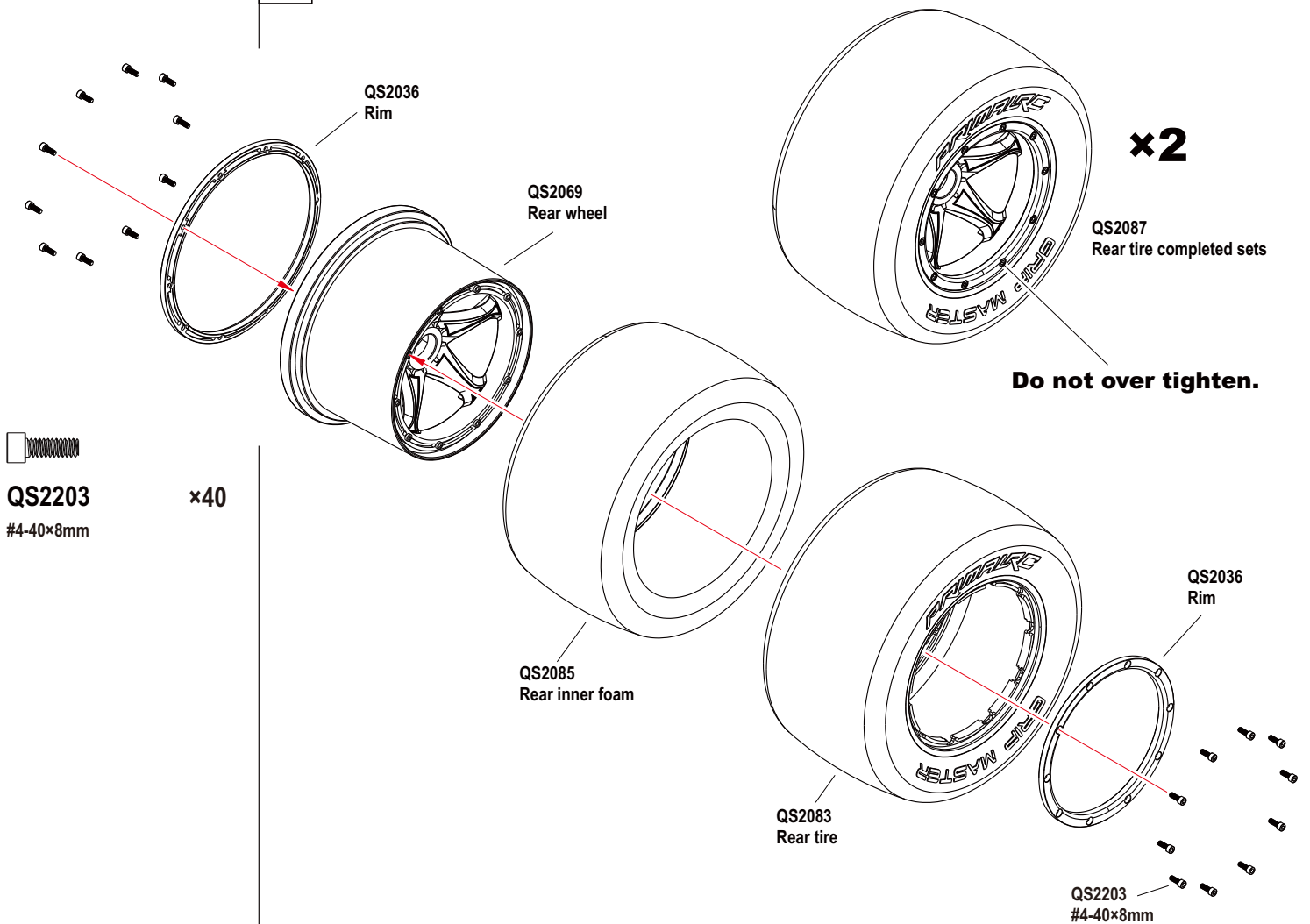
x2



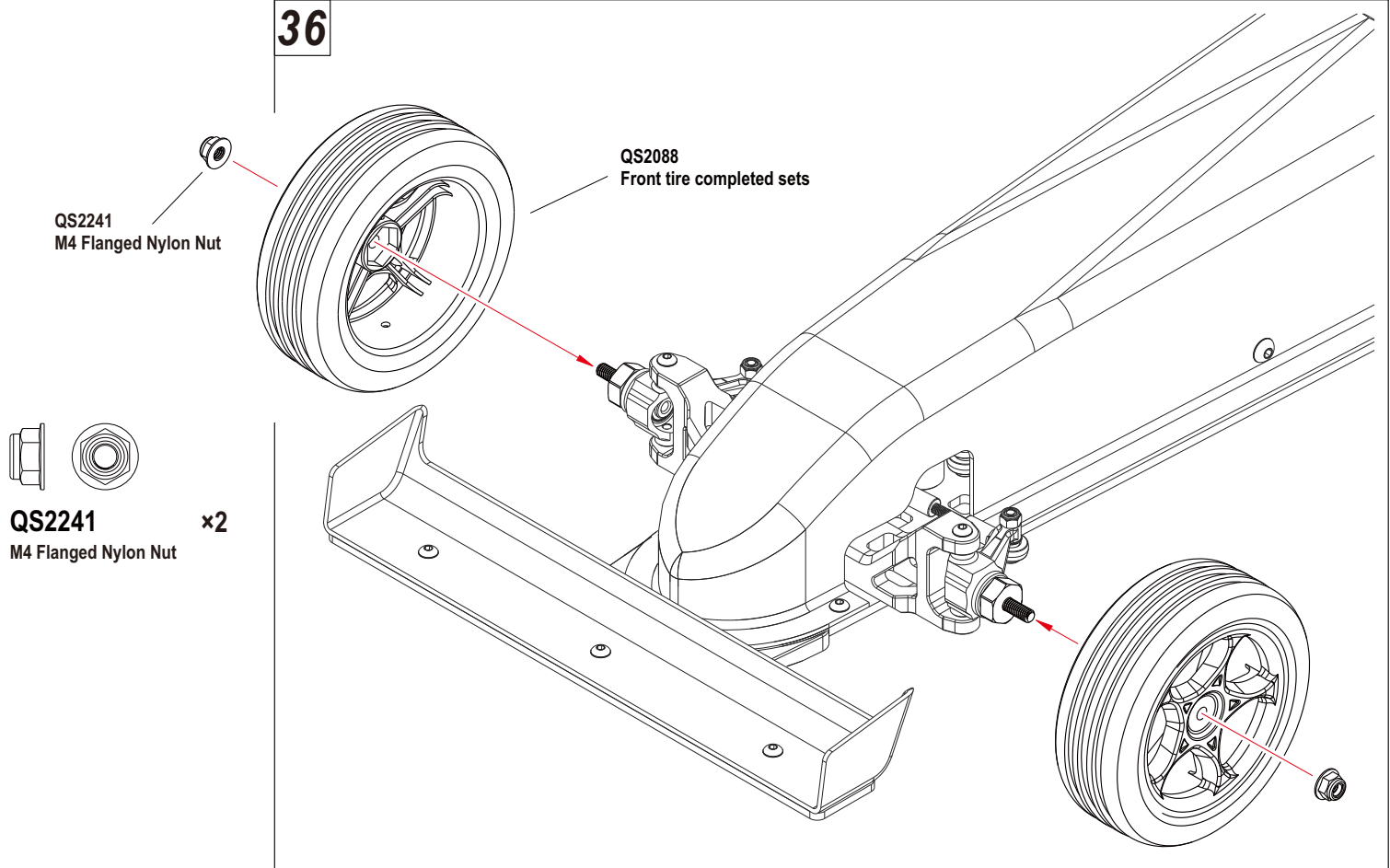
34 Front Tire



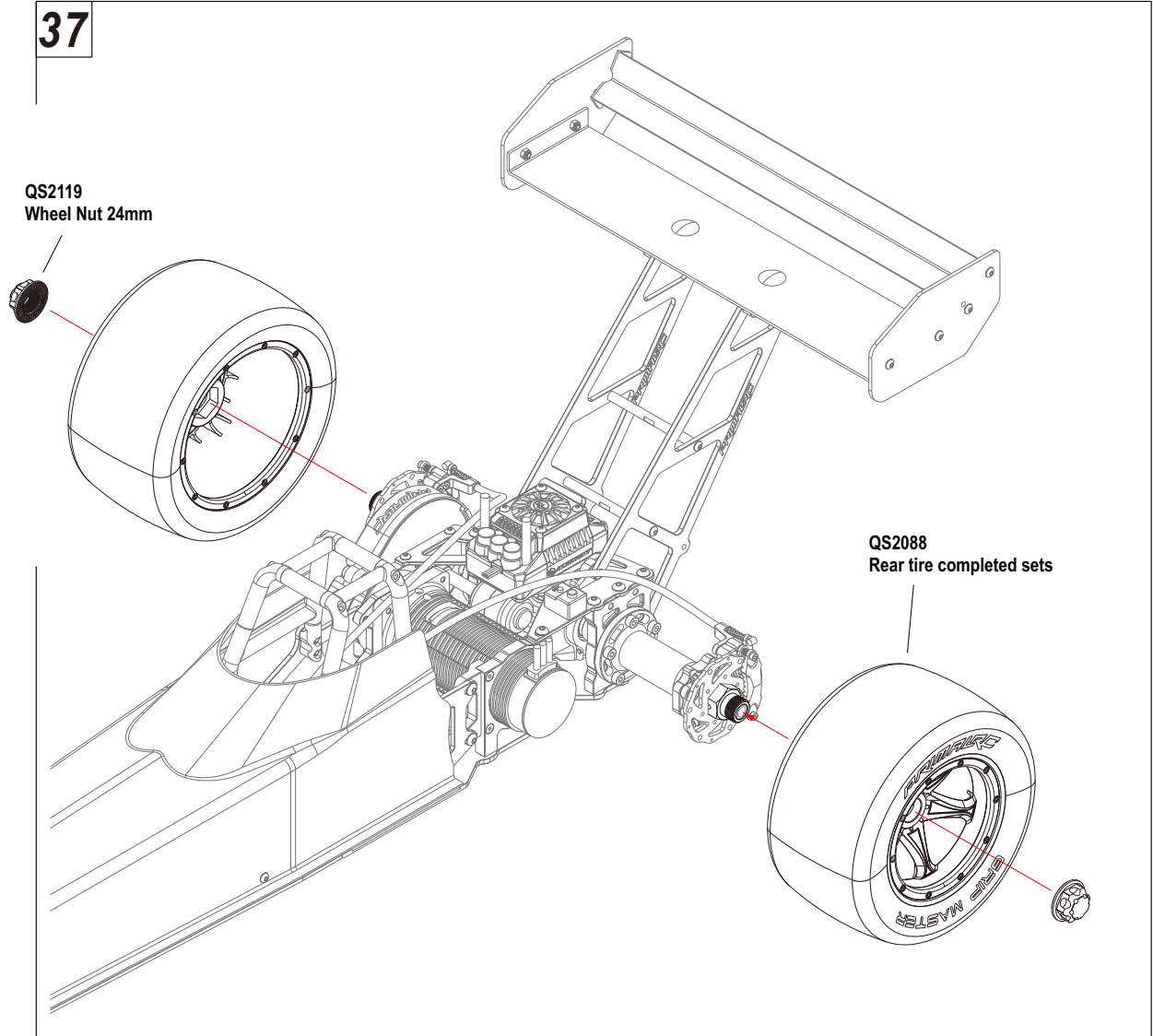
35 Rear Tire



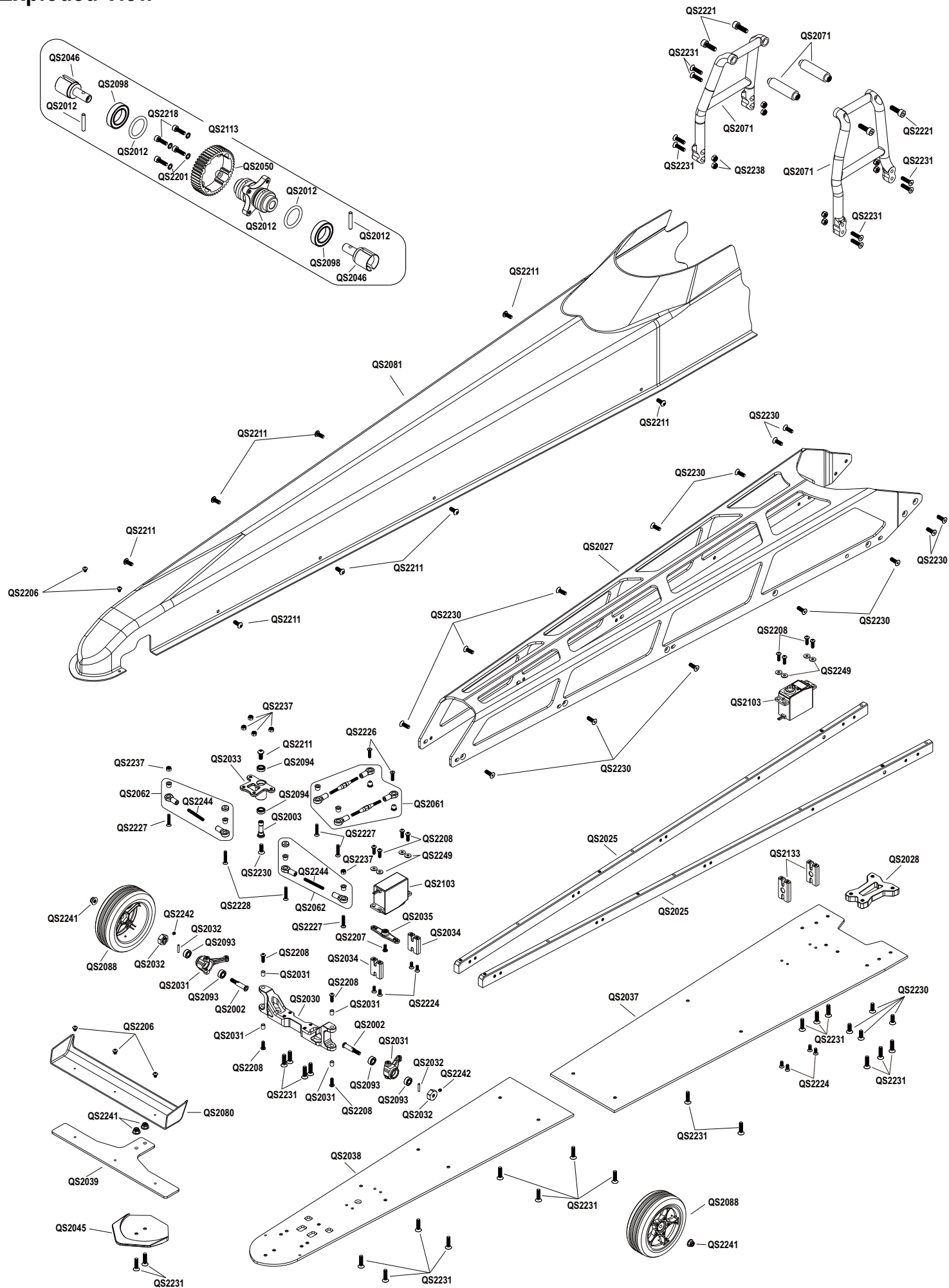
36



37



Exploded View

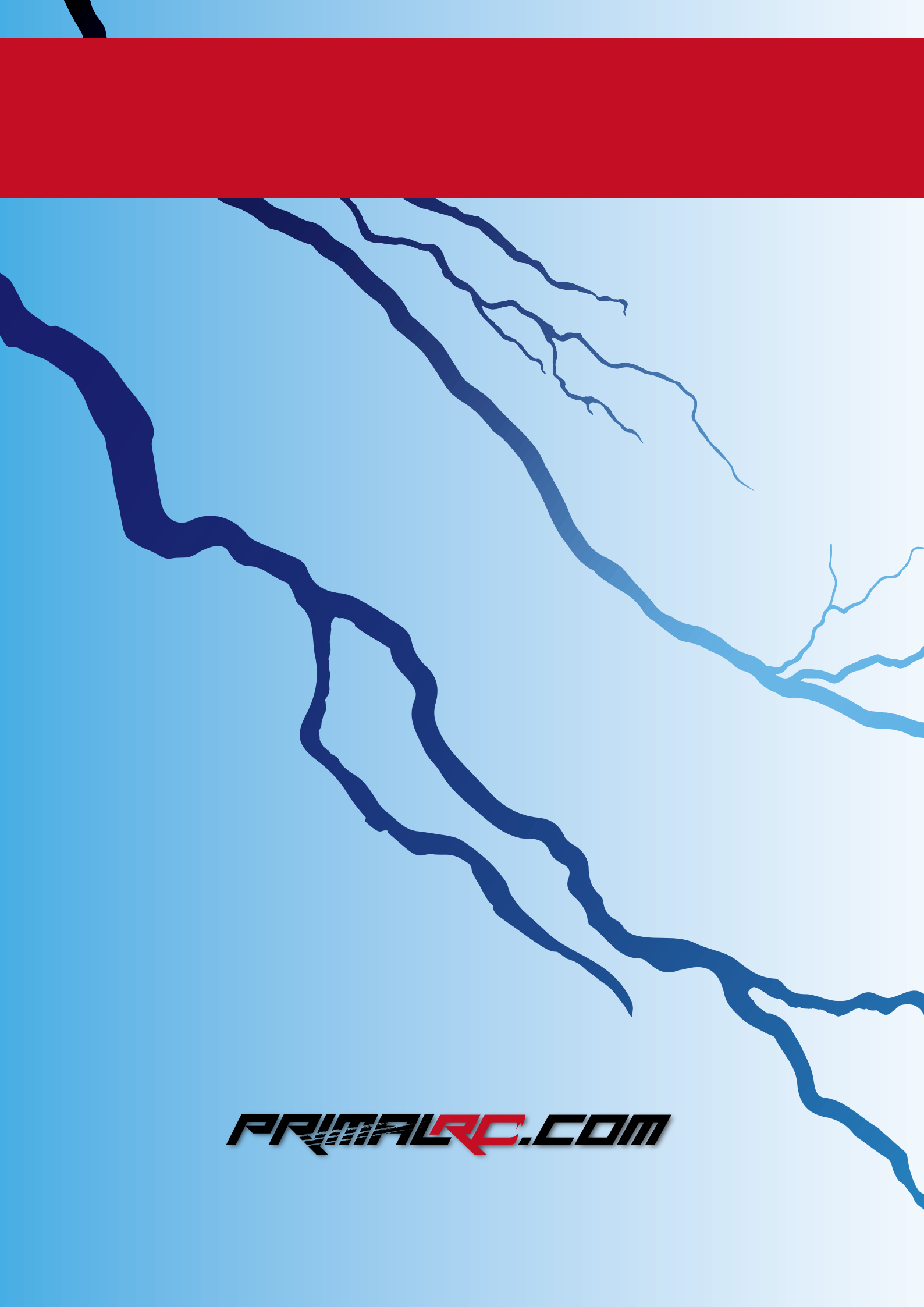




Parts list

| Part # | QTY | Description |
|--------|-----|---------------------------|
| QS2001 | 2 | Drive shaft 15×88mm |
| QS2002 | 2 | Front axle |
| QS2003 | 1 | Steering post |
| QS2012 | 1 | Gear mount |
| QS2013 | 1 | Rear arm mounting seat |
| QS2014 | 1 | Rear arm |
| QS2019 | 4 | Rear wing mounting seat |
| QS2020 | 2 | Wing mount |
| QS2021 | 4 | Joint 7×84mm |
| QS2024 | 2 | Reinforcement plate |
| QS2025 | 2 | Chassis reinforcement bar |
| QS2027 | 1 | Frame cage |
| QS2028 | 1 | Chassis joint block |
| QS2030 | 1 | Front suspension arm |
| QS2031 | 2 | Front hub carrier |
| QS2032 | 2 | Front hex hub 12mm |
| QS2033 | 1 | Steering system |
| QS2034 | 2 | Servo mount |
| QS2035 | 1 | Servo arm |
| QS2036 | 2 | Rim |
| QS2037 | 1 | Chassis 1 |
| QS2038 | 1 | Chassis 2 |
| QS2039 | 1 | Front wing mount |
| QS2040 | 1 | Gear cover set |
| QS2043 | 1 | Rear wing set |
| QS2044 | 2 | Carbon fiber wings |
| QS2045 | 1 | Front chassis cover |
| QS2046 | 2 | Diff shaft |
| QS2047 | 1 | Gear box set |
| QS2050 | 1 | Gear 48 tooth |
| QS2051 | 1 | Drive gear 20 tooth |
| QS2052 | 1 | Idle gear 30 tooth |
| QS2053 | 2 | Wheel hex hub 24mm |
| QS2054 | 2 | Drive axle |
| QS2058 | 1 | Clutch bell |
| QS2059 | 1 | Drive gear shaft |
| QS2060 | 1 | Rear hub carrier |
| QS2061 | 2 | Turnbuckle for servo |
| QS2062 | 2 | Turnbuckle for steering |
| QS2068 | 1 | Wing mount set |
| QS2069 | 2 | Rear wheel |
| QS2070 | 2 | Front hub |
| QS2071 | 1 | Roll cage set |
| QS2073 | 1 | Spur gear holder |
| QS2074 | 1 | Spur gear 55 tooth |
| QS2075 | 1 | Spur gear 54 tooth |
| QS2076 | 1 | Spur gear 53 tooth |
| QS2077 | 1 | Spur gear 52 tooth |
| QS2078 | 1 | Spur gear 51 tooth |
| QS2079 | 1 | Spur gear 50 tooth |
| QS2080 | 1 | Front wing |
| QS2081 | 1 | Bodyshell |
| QS2083 | 2 | Rear tire |
| QS2084 | 2 | Front tire |
| QS2085 | 2 | Rear inner foam |
| QS2086 | 2 | Front inner foam |
| QS2087 | 2 | Rear tire completed sets |
| QS2088 | 2 | Front tire completed sets |
| QS2090 | 10 | Gummed wire clamp |
| QS2092 | 10 | 8mm body clip |
| QS2093 | 4 | Bearing 5×10×4mm |
| QS2094 | 4 | Bearing 6×10×3mm |
| QS2096 | 9 | Bearing 12×24×6mm |
| QS2097 | 2 | Bearing 17×30×7mm |
| QS2098 | 2 | Bearing 20×32×7mm |
| QS2101 | 1 | Antenna pipe |
| QS2102 | 1 | Transmitter |
| QS2103 | 1 | No.712 servo |
| QS2105 | 1 | Velcro 700mm |
| QS2110 | 1 | Wrench |
| QS2111 | 1 | Wheel wrench |
| QS2113 | 1 | Completed gear set |
| QS2114 | 1 | Stripes Sticker |
| QS2115 | 1 | Lightning Sticker |
| QS2116 | 2 | Receiver extension wire |
| QS2119 | 1 | Wheel nut 24mm |
| QS2122 | 1 | Clutch |
| QS2123 | 1 | Chassis plate |

| Part # | QTY | Description |
|--------|-----|---------------------------|
| QS2124 | 1 | Motor mount |
| QS2125 | 1 | Clutch mount |
| QS2126 | 1 | Clutch house |
| QS2127 | 1 | Right side plate |
| QS2128 | 1 | Gear plate |
| QS2129 | 1 | Rear upper plate |
| QS2130 | 1 | Battery mounting seat |
| QS2131 | 1 | Side plate |
| QS2132 | 1 | Brake system base |
| QS2133 | 1 | Servo mount |
| QS2134 | 1 | Brake line |
| QS2135 | 1 | Brushless ESC 200A |
| QS2136 | 1 | Brushless Motor 960kv |
| QS2137 | 2 | Velcro 400mm |
| QS2138 | 1 | Pinion gear 17T |
| QS2139 | 1 | Spacer 4mm |
| QS2140 | 1 | Brake system |
| QS2201 | 10 | M4 locking washer |
| QS2202 | 10 | E-Clip 7×14×1mm |
| QS2203 | 10 | #4-40×8 Cap head screw |
| QS2204 | 10 | M2.5×6 Button head screw |
| QS2205 | 10 | M2.5×10 Button head screw |
| QS2206 | 10 | M3×4 Button head screw |
| QS2207 | 10 | M3×8 Button head screw |
| QS2208 | 10 | M3×10 Button head screw |
| QS2209 | 10 | M3×14 Button head screw |
| QS2210 | 10 | M4×6 Button head screw |
| QS2211 | 10 | M4×10 Button head screw |
| QS2212 | 10 | M4×12 Button head screw |
| QS2213 | 10 | M4×16 Button head screw |
| QS2214 | 10 | M5×12 Button head screw |
| QS2215 | 10 | M5×25 Button head screw |
| QS2216 | 10 | M6×20 Button head screw |
| QS2217 | 10 | M4×6 Cap head screw |
| QS2218 | 10 | M4×14 Cap head screw |
| QS2219 | 10 | M4×16 Cap head screw |
| QS2220 | 10 | M4×45 Cap head screw |
| QS2221 | 10 | M5×14 Cap head screw |
| QS2222 | 10 | M5×16 Cap head screw |
| QS2223 | 10 | M5×20 Cap head screw |
| QS2224 | 10 | M3×8 Flat head screw |
| QS2225 | 10 | M3×10 Flat head screw |
| QS2226 | 10 | M3×12 Flat head screw |
| QS2227 | 10 | M3×16 Flat head screw |
| QS2228 | 10 | M3×18 Flat head screw |
| QS2229 | 10 | M4×10 Flat head screw |
| QS2230 | 10 | M4×12 Flat head screw |
| QS2231 | 10 | M4×16 Flat head screw |
| QS2232 | 10 | M5×12 Flat head screw |
| QS2233 | 10 | M5×14 Flat head screw |
| QS2234 | 10 | M5×20 Flat head screw |
| QS2235 | 10 | M5×25 Flat head screw |
| QS2236 | 10 | M6×16 Flat head screw |
| QS2237 | 10 | M3 Nylon nut |
| QS2238 | 10 | M4 Nylon nut |
| QS2239 | 10 | M5 Nylon nut |
| QS2240 | 10 | M3 Flanged nylon nut |
| QS2241 | 10 | M4 Flanged nylon nut |
| QS2242 | 10 | M3×3 Set screw |
| QS2243 | 10 | M3×8 Set screw |
| QS2244 | 10 | M3×30 Set screw |
| QS2245 | 10 | M4×4 Set screw |
| QS2246 | 10 | M4 Spring washer |
| QS2247 | 10 | M5 Spring washer |
| QS2248 | 10 | ST3×12 Tp.Flanged screw |
| QS2249 | 10 | Washer 3×8×1mm |
| QS2250 | 10 | M3×6 Button head screw |
| QS2251 | 10 | M5×10 Button head screw |
| QS2252 | 10 | M3×20 Cap head screw |
| QS2253 | 10 | M4×8 Cap head screw |
| QS2254 | 10 | M3×35 Cap head screw |
| QS2255 | 10 | M5×8 Cap head screw |
| QS2256 | 10 | M4×10 Cap head screw |
| QS2257 | 10 | M4×12 Cap head screw |
| QS2258 | 10 | M4×8 Flat head screw |
| QS2259 | 10 | M3×5 Flat head screw |
| QS2260 | 10 | M5×5 Set screw |



PRIMALRC.COM